



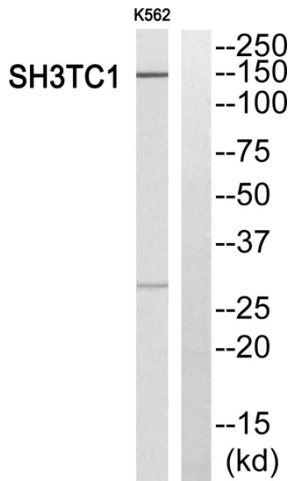
SH3TC1 Polyclonal Antibody

| | |
|----------------------------------|---|
| Catalog No | BYab-12804 |
| Isotype | IgG |
| Reactivity | Human;Rat;Mouse; |
| Applications | WB;ELISA |
| Gene Name | SH3TC1 |
| Protein Name | SH3 domain and tetratricopeptide repeat-containing protein 1 |
| Immunogen | The antiserum was produced against synthesized peptide derived from human SH3TC1. AA range:391-440 |
| Specificity | SH3TC1 Polyclonal Antibody detects endogenous levels of SH3TC1 protein. |
| Formulation | Liquid in PBS containing 50% glycerol, 0.5% BSA and 0.02% sodium azide. |
| Source | Polyclonal, Rabbit,IgG |
| Purification | The antibody was affinity-purified from rabbit antiserum by affinity-chromatography using epitope-specific immunogen. |
| Dilution | Western Blot: 1/500 - 1/2000. ELISA: 1/10000. Not yet tested in other applications. |
| Concentration | 1 mg/ml |
| Purity | ≥90% |
| Storage Stability | -20°C/1 year |
| Synonyms | SH3TC1; SH3 domain and tetratricopeptide repeat-containing protein 1 |
| Observed Band | 150kD |
| Cell Pathway | |
| Tissue Specificity | Eye,Liver,Spleen,Thymus, |
| Function | similarity:Contains 1 SH3 domain.,similarity:Contains 9 TPR repeats., |
| Background | similarity:Contains 1 SH3 domain.,similarity:Contains 9 TPR repeats., |
| matters needing attention | Avoid repeated freezing and thawing! |
| Usage suggestions | This product can be used in immunological reaction related experiments. For more information, please consult technical personnel. |

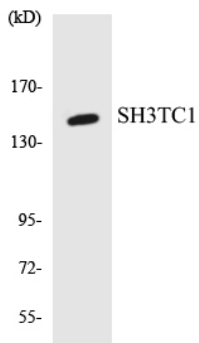
Nanjing BYabscience technology Co.,Ltd



Products Images



Western blot analysis of SH3TC1 Antibody. The lane on the right is blocked with the SH3TC1 peptide.



Western blot analysis of the lysates from RAW264.7 cells using SH3TC1 antibody.