



SCFD1 Polyclonal Antibody

Catalog No	BYab-12802
Isotype	IgG
Reactivity	Human;Mouse;Rat
Applications	WB;IHC
Gene Name	SCFD1
Protein Name	Sec1 family domain-containing protein 1
Immunogen	The antiserum was produced against synthesized peptide derived from human SCFD1. AA range:533-582
Specificity	SCFD1 Polyclonal Antibody detects endogenous levels of SCFD1 protein.
Formulation	Liquid in PBS containing 50% glycerol, 0.5% BSA and 0.02% sodium azide.
Source	Polyclonal, Rabbit,IgG
Purification	The antibody was affinity-purified from rabbit antiserum by affinity-chromatography using epitope-specific immunogen.
Dilution	WB 1:500-2000;IHC-p 1:50-300
Concentration	1 mg/ml
Purity	≥90%
Storage Stability	-20°C/1 year
Synonyms	SCFD1; C14orf163; KIAA0917; STXBP1L2; FKSG23; Sec1 family domain-containing protein 1; SLY1 homolog; Sly1p; Syntaxin-binding protein 1-like 2
Observed Band	
Cell Pathway	Cytoplasm . Endoplasmic reticulum membrane ; Peripheral membrane protein . Golgi apparatus, Golgi stack membrane ; Peripheral membrane protein .
Tissue Specificity	Brain,Epithelium,Heart,Liver,Lymph,Pituitary,Placenta,Platelet,Umbilical co
Function	function:Involved in vesicular transport between the endoplasmic reticulum and the Golgi.,PTM:Phosphorylated upon DNA damage, probably by ATM or ATR.,similarity:Belongs to the STXBP/unc-18/SEC1 family.,subunit:Binds STX5A.,
Background	function:Involved in vesicular transport between the endoplasmic reticulum and the Golgi.,PTM:Phosphorylated upon DNA damage, probably by ATM or ATR.,similarity:Belongs to the STXBP/unc-18/SEC1 family.,subunit:Binds STX5A.,

Nanjing BYabscience technology Co.,Ltd



matters needing attention

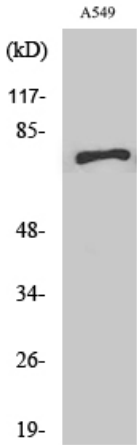
Avoid repeated freezing and thawing!

Usage suggestions

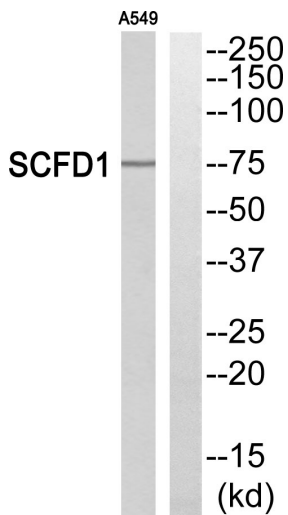
This product can be used in immunological reaction related experiments. For more information, please consult technical personnel.



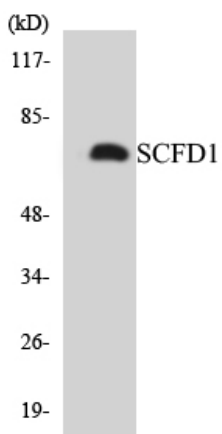
Products Images



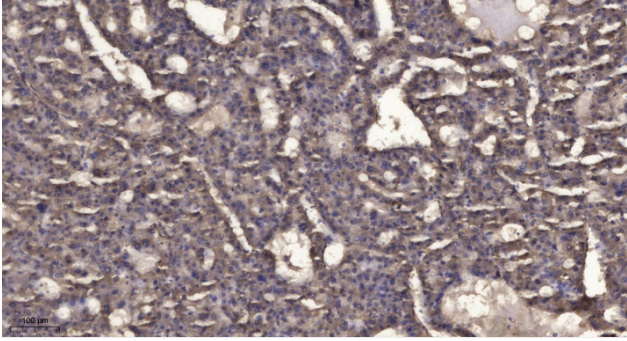
Western Blot analysis of various cells using SCFD1 Polyclonal Antibody



Western blot analysis of SCFD1 Antibody. The lane on the right is blocked with the SCFD1 peptide.



Western blot analysis of the lysates from 293 cells using SCFD1 antibody.



Immunohistochemical analysis of paraffin-embedded human liver cancer. 1, Antibody was diluted at 1:200(4° overnight). 2, Tris-EDTA,pH9.0 was used for antigen retrieval. 3,Secondary antibody was diluted at 1:200(room temperature, 45min).