



Robo2 Polyclonal Antibody

Catalog No	BYab-12800
Isotype	IgG
Reactivity	Human;Mouse;Rat
Applications	IHC;IF;ELISA
Gene Name	ROBO2
Protein Name	Roundabout homolog 2
Immunogen	The antiserum was produced against synthesized peptide derived from human ROBO2. AA range:237-286
Specificity	Robo2 Polyclonal Antibody detects endogenous levels of Robo2 protein.
Formulation	Liquid in PBS containing 50% glycerol, 0.5% BSA and 0.02% sodium azide.
Source	Polyclonal, Rabbit,IgG
Purification	The antibody was affinity-purified from rabbit antiserum by affinity-chromatography using epitope-specific immunogen.
Dilution	IHC: 1/100 - 1/300. ELISA: 1/40000.. IF 1:50-200
Concentration	1 mg/ml
Purity	≥90%
Storage Stability	-20°C/1 year
Synonyms	ROBO2; KIAA1568; Roundabout homolog 2
Observed Band	
Cell Pathway	Membrane ; Single-pass type I membrane protein .
Tissue Specificity	Brain,Clones donated by Kazusa DNA Research Inst.,Ovary,
Function	disease:A chromosomal aberration involving ROBO2 is a cause of multiple congenital abnormalities, including severe bilateral VUR with ureterovesical junction defects. Translocation t(Y;3)(p11;p12) with PCDH11Y. This translocation disrupts ROBO2 and produces dominant-negative ROBO2 proteins that abrogate SLIT-ROBO signaling in vitro.,disease:Defects in ROBO2 are the cause of vesicoureteral reflux type 2 (VUR2) [MIM:610878]. VUR is a complex, genetically heterogeneous developmental disorder characterized by the retrograde flow of urine from the bladder into the ureter and is associated with reflux nephropathy, the cause of 15% of end-stage renal disease in children and young adults.,function:Receptor for SLIT2, and probably SLIT1, which are thought to act as molecular guidance cue in cellular migration, including axonal navigation at the

Nanjing BYabscience technology Co.,Ltd



ventral midline of the neural tube and projection of

Background

The protein encoded by this gene belongs to the ROBO family, part of the immunoglobulin superfamily of proteins that are highly conserved from fly to human. The encoded protein is a transmembrane receptor for the slit homolog 2 protein and functions in axon guidance and cell migration. Mutations in this gene are associated with vesicoureteral reflux, characterized by the backward flow of urine from the bladder into the ureters or the kidney. Alternative splicing results in multiple transcript variants. [provided by RefSeq, Feb 2014],

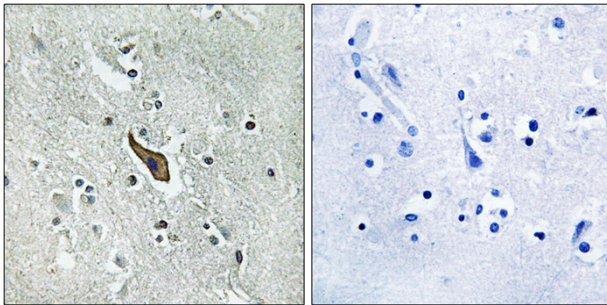
matters needing attention

Avoid repeated freezing and thawing!

Usage suggestions

This product can be used in immunological reaction related experiments. For more information, please consult technical personnel.

Products Images



Immunohistochemistry analysis of paraffin-embedded human brain tissue, using ROBO2 Antibody. The picture on the right is blocked with the synthesized peptide.