



PDZK3 Polyclonal Antibody

Catalog No	BYab-12791
Isotype	IgG
Reactivity	Human;Mouse;Rat
Applications	IHC;IF;ELISA
Gene Name	PDZD2
Protein Name	PDZ domain-containing protein 2
Immunogen	The antiserum was produced against synthesized peptide derived from human PDZD2. AA range:51-100
Specificity	PDZK3 Polyclonal Antibody detects endogenous levels of PDZK3 protein.
Formulation	Liquid in PBS containing 50% glycerol, 0.5% BSA and 0.02% sodium azide.
Source	Polyclonal, Rabbit,IgG
Purification	The antibody was affinity-purified from rabbit antiserum by affinity-chromatography using epitope-specific immunogen.
Dilution	Immunohistochemistry: 1/100 - 1/300. Immunofluorescence: 1/200 - 1/1000. ELISA: 1/10000. Not yet tested in other applications.
Concentration	1 mg/ml
Purity	≥90%
Storage Stability	-20°C/1 year
Synonyms	PDZD2; AIPC; KIAA0300; PDZK3; PDZ domain-containing protein 2; Activated in prostate cancer protein; PDZ domain-containing protein 3
Observed Band	
Cell Pathway	Nucleus . Cytoplasm . Endoplasmic reticulum . At cell-cell contacts in lung epithelial cells. .; [Processed PDZ domain-containing protein 2]: Secreted .
Tissue Specificity	Isoform 2 is expressed (at protein level) in prostate and many prostate tumors.
Function	disease:May be associated with the early promotion of prostate tumorigenesis.,PTM:A secreted form is produced by caspase-mediated proteolytic cleavage.,similarity:Contains 1 PDZ (DHR) domain.,similarity:Contains 6 PDZ (DHR) domains.,subcellular location:At cell-cell contacts in lung epithelial cells.,subunit:Interacts with SCN10A, CTNND2 and PKP4.,tissue specificity:Expressed (at protein level) in prostate and many prostate tumors.,
Background	The protein encoded by this gene contains six PDZ domains and shares sequence similarity with pro-interleukin-16 (pro-IL-16). Like pro-IL-16, the encoded protein localizes to the endoplasmic reticulum and is thought to be

Nanjing BYabscience technology Co.,Ltd



cleaved by a caspase to produce a secreted peptide containing two PDZ domains. In addition, this gene is upregulated in primary prostate tumors and may be involved in the early stages of prostate tumorigenesis. [provided by RefSeq, Dec 2015],

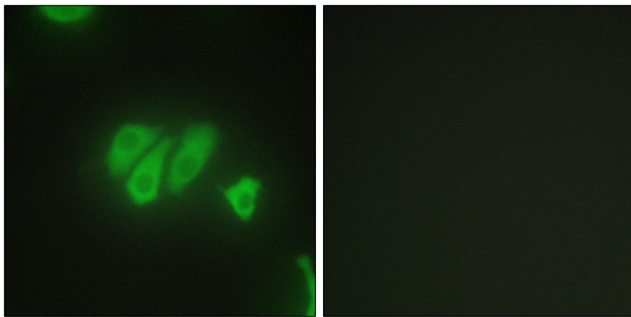
matters needing attention

Avoid repeated freezing and thawing!

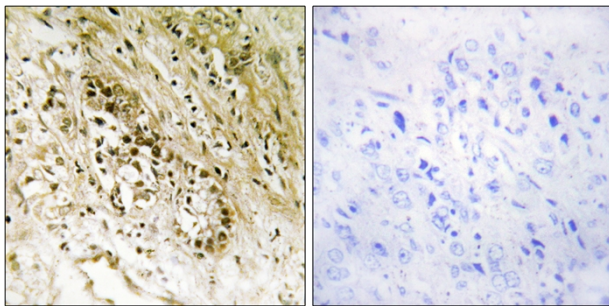
Usage suggestions

This product can be used in immunological reaction related experiments. For more information, please consult technical personnel.

Products Images



Immunofluorescence analysis of HepG2 cells, using PDZD2 Antibody. The picture on the right is blocked with the synthesized peptide.



Immunohistochemistry analysis of paraffin-embedded human heart tissue, using PDZD2 Antibody. The picture on the right is blocked with the synthesized peptide.