



p39 Polyclonal Antibody

Catalog No	BYab-12788
Isotype	IgG
Reactivity	Human;Rat;Mouse;
Applications	WB;IHC;IF;ELISA
Gene Name	CDK5R2
Protein Name	Cyclin-dependent kinase 5 activator 2
Immunogen	The antiserum was produced against synthesized peptide derived from human CDK5R2. AA range:81-130
Specificity	p39 Polyclonal Antibody detects endogenous levels of p39 protein.
Formulation	Liquid in PBS containing 50% glycerol, 0.5% BSA and 0.02% sodium azide.
Source	Polyclonal, Rabbit,IgG
Purification	The antibody was affinity-purified from rabbit antiserum by affinity-chromatography using epitope-specific immunogen.
Dilution	WB: 1/500 - 1/2000. IHC: 1/100 - 1/300. ELISA: 1/20000.. IF 1:50-200
Concentration	1 mg/ml
Purity	≥90%
Storage Stability	-20°C/1 year
Synonyms	CDK5R2; NCK5A1; Cyclin-dependent kinase 5 activator 2; CDK5 activator 2; Cyclin-dependent kinase 5 regulatory subunit 2; p39; p39l
Observed Band	40kD
Cell Pathway	Cell membrane ; Lipid-anchor ; Cytoplasmic side .
Tissue Specificity	Brain and neuron specific.
Function	function:Activator of CDK5/TPKII.,similarity:Belongs to the cyclin-dependent kinase 5 activator family.,subunit:Heterodimer of a catalytic subunit and a regulatory subunit.,tissue specificity:Brain and neuron specific.,
Background	The protein encoded by this gene is a neuron-specific activator of CDK5 kinase. It associates with CDK5 to form an active kinase. This protein and neuron-specific CDK5 activator CDK5R1/p39NCK5A both share limited similarity to cyclins, and thus may define a distinct family of cyclin-dependent kinase activating proteins. [provided by RefSeq, Jul 2008],

Nanjing BYabscience technology Co.,Ltd



matters needing attention

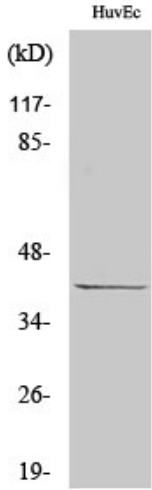
Avoid repeated freezing and thawing!

Usage suggestions

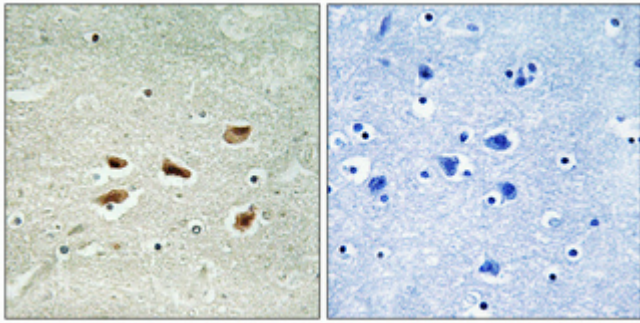
This product can be used in immunological reaction related experiments. For more information, please consult technical personnel.



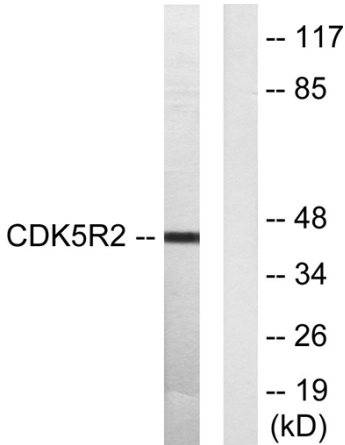
Products Images



Western Blot analysis of various cells using p39 Polyclonal Antibody cells nucleus extracted by Minute TM Cytoplasmic and Nuclear Fractionation kit (SC-003, Inventbiotech, MN, USA).



Immunohistochemical analysis of paraffin-embedded Human brain. Antibody was diluted at 1:100 (4° overnight). High-pressure and temperature Tris-EDTA, pH8.0 was used for antigen retrieval. Negative control (right) obtained from antibody was pre-absorbed by immunogen peptide.



Western blot analysis of lysates from HUVEC cells, using CDK5R2 Antibody. The lane on the right is blocked with the synthesized peptide.