



# Orexin R-1 Polyclonal Antibody

<b>Catalog No</b>	BYab-12786
<b>Isotype</b>	IgG
<b>Reactivity</b>	Human;Mouse;Rat
<b>Applications</b>	IF;ELISA
<b>Gene Name</b>	HCRTR1
<b>Protein Name</b>	Orexin receptor type 1
<b>Immunogen</b>	The antiserum was produced against synthesized peptide derived from human HCRTR1. AA range:298-347
<b>Specificity</b>	Orexin R-1 Polyclonal Antibody detects endogenous levels of Orexin R-1 protein.
<b>Formulation</b>	Liquid in PBS containing 50% glycerol, 0.5% BSA and 0.02% sodium azide.
<b>Source</b>	Polyclonal, Rabbit,IgG
<b>Purification</b>	The antibody was affinity-purified from rabbit antiserum by affinity-chromatography using epitope-specific immunogen.
<b>Dilution</b>	Immunofluorescence: 1/200 - 1/1000. ELISA: 1/20000. Not yet tested in other applications.
<b>Concentration</b>	1 mg/ml
<b>Purity</b>	≥90%
<b>Storage Stability</b>	-20°C/1 year
<b>Synonyms</b>	HCRTR1; Orexin receptor type 1; Ox-1-R; Ox1-R; Ox1R; Hypocretin receptor type 1
<b>Observed Band</b>	
<b>Cell Pathway</b>	Cell membrane ; Multi-pass membrane protein .
<b>Tissue Specificity</b>	Brain,
<b>Function</b>	function:Moderately selective excitatory receptor for orexin-A and, with a lower affinity, for orexin-B neuropeptide. Seems to be exclusively coupled to the G(q) subclass of heteromeric G proteins, which activates the phospholipase C mediated signaling cascade.,similarity:Belongs to the G-protein coupled receptor 1 family.,
<b>Background</b>	The protein encoded by this gene is a G-protein coupled receptor involved in the regulation of feeding behavior. The encoded protein selectively binds the hypothalamic neuropeptide orexin A. A related gene (HCRTR2) encodes a G-protein coupled receptor that binds orexin A and orexin B. [provided by RefSeq,

Nanjing BYabscience technology Co.,Ltd



Jan 2009],

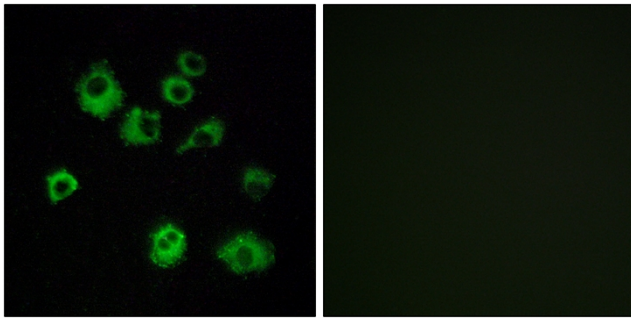
**matters needing attention**

Avoid repeated freezing and thawing!

**Usage suggestions**

This product can be used in immunological reaction related experiments. For more information, please consult technical personnel.

## Products Images



Immunofluorescence analysis of MCF7 cells, using HCRTR1 Antibody. The picture on the right is blocked with the synthesized peptide.