



# NTT5 Polyclonal Antibody

<b>Catalog No</b>	BYab-12783
<b>Isotype</b>	IgG
<b>Reactivity</b>	Human;Rat;Mouse;
<b>Applications</b>	IHC;IF;ELISA
<b>Gene Name</b>	SLC6A16
<b>Protein Name</b>	Orphan sodium- and chloride-dependent neurotransmitter transporter NTT5
<b>Immunogen</b>	The antiserum was produced against synthesized peptide derived from human SLC6A16. AA range:233-282
<b>Specificity</b>	NTT5 Polyclonal Antibody detects endogenous levels of NTT5 protein.
<b>Formulation</b>	Liquid in PBS containing 50% glycerol, 0.5% BSA and 0.02% sodium azide.
<b>Source</b>	Polyclonal, Rabbit,IgG
<b>Purification</b>	The antibody was affinity-purified from rabbit antiserum by affinity-chromatography using epitope-specific immunogen.
<b>Dilution</b>	IHC: 1/100 - 1/300. ELISA: 1/40000.. IF 1:50-200
<b>Concentration</b>	1 mg/ml
<b>Purity</b>	≥90%
<b>Storage Stability</b>	-20°C/1 year
<b>Synonyms</b>	SLC6A16; NTT5; Orphan sodium- and chloride-dependent neurotransmitter transporter NTT5; Solute carrier family 6 member 16
<b>Observed Band</b>	
<b>Cell Pathway</b>	Membrane; Multi-pass membrane protein.
<b>Tissue Specificity</b>	Highly expressed in peripheral tissues, particularly in testis, pancreas, and prostate.
<b>Function</b>	similarity:Belongs to the sodium:neurotransmitter symporter (SNF) family.,tissue specificity:Highly expressed in peripheral tissues, particularly in testis, pancreas, and prostate.,
<b>Background</b>	SLC6A16 shows structural characteristics of an Na(+)- and Cl(-)-dependent neurotransmitter transporter, including 12 transmembrane (TM) domains, intracellular N and C termini, and large extracellular loops containing multiple N-glycosylation sites.[supplied by OMIM, Mar 2008],

Nanjing BYabscience technology Co.,Ltd



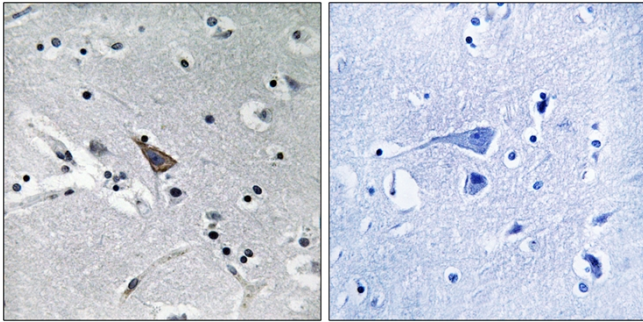
**matters needing attention**

Avoid repeated freezing and thawing!

**Usage suggestions**

This product can be used in immunological reaction related experiments. For more information, please consult technical personnel.

## Products Images



Immunohistochemistry analysis of paraffin-embedded human brain, using SLC6A16 Antibody. The picture on the right is blocked with the synthesized peptide.