



NPDC-1 Polyclonal Antibody

Catalog No	BYab-12775
Isotype	IgG
Reactivity	Human;Mouse;Rat
Applications	WB;ELISA
Gene Name	NPDC1
Protein Name	Neural proliferation differentiation and control protein 1
Immunogen	The antiserum was produced against synthesized peptide derived from human NPDC1. AA range:189-238
Specificity	NPDC-1 Polyclonal Antibody detects endogenous levels of NPDC-1 protein.
Formulation	Liquid in PBS containing 50% glycerol, 0.5% BSA and 0.02% sodium azide.
Source	Polyclonal, Rabbit,IgG
Purification	The antibody was affinity-purified from rabbit antiserum by affinity-chromatography using epitope-specific immunogen.
Dilution	Western Blot: 1/500 - 1/2000. ELISA: 1/20000. Not yet tested in other applications.
Concentration	1 mg/ml
Purity	≥90%
Storage Stability	-20°C/1 year
Synonyms	NPDC1; Neural proliferation differentiation and control protein 1; NPDC-1
Observed Band	35kD
Cell Pathway	Membrane ; Single-pass membrane protein .
Tissue Specificity	Strongly expressed in adult brain; especially in hippocampus, frontal lobe and temporal lobe.
Function	function:Suppresses oncogenic transformation in neural and non-neural cells and down-regulates neural cell proliferation. Might be involved in transcriptional regulation.,similarity:Belongs to the NPDC1/cab-1 family.,tissue specificity:Strongly expressed in adult brain; especially in hippocampus, frontal lobe and temporal lobe.,
Background	function:Suppresses oncogenic transformation in neural and non-neural cells and down-regulates neural cell proliferation. Might be involved in transcriptional regulation.,similarity:Belongs to the NPDC1/cab-1 family.,tissue specificity:Strongly expressed in adult brain; especially in hippocampus, frontal lobe and temporal lobe.,

Nanjing BYabscience technology Co.,Ltd



matters needing attention

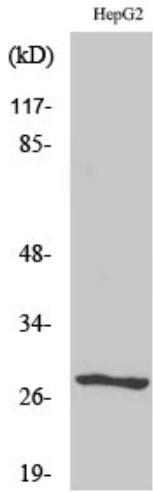
Avoid repeated freezing and thawing!

Usage suggestions

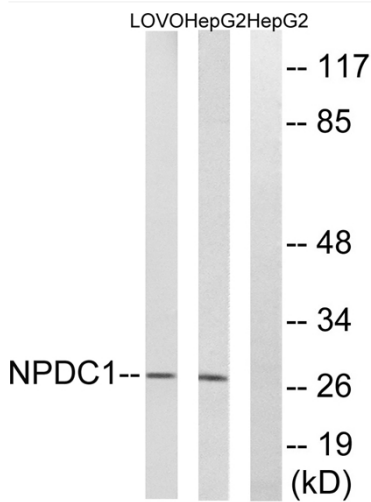
This product can be used in immunological reaction related experiments. For more information, please consult technical personnel.



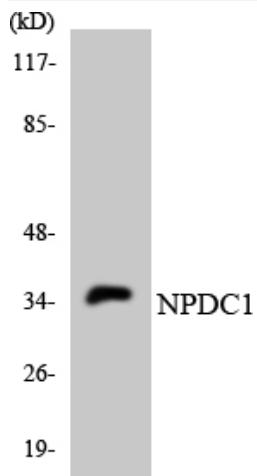
Products Images



Western Blot analysis of various cells using NPDC-1 Polyclonal Antibody



Western blot analysis of lysates from HepG2 and LOVO cells, using NPDC1 Antibody. The lane on the right is blocked with the synthesized peptide.



Western blot analysis of the lysates from K562 cells using NPDC1 antibody.