



# NMBR Polyclonal Antibody

<b>Catalog No</b>	BYab-12772
<b>Isotype</b>	IgG
<b>Reactivity</b>	Human;Mouse;Rat
<b>Applications</b>	WB;IF;ELISA
<b>Gene Name</b>	NMBR
<b>Protein Name</b>	Neuromedin-B receptor
<b>Immunogen</b>	The antiserum was produced against synthesized peptide derived from human NMBR. AA range:221-270
<b>Specificity</b>	NMBR Polyclonal Antibody detects endogenous levels of NMBR protein.
<b>Formulation</b>	Liquid in PBS containing 50% glycerol, 0.5% BSA and 0.02% sodium azide.
<b>Source</b>	Polyclonal, Rabbit,IgG
<b>Purification</b>	The antibody was affinity-purified from rabbit antiserum by affinity-chromatography using epitope-specific immunogen.
<b>Dilution</b>	Western Blot: 1/500 - 1/2000. Immunofluorescence: 1/200 - 1/1000. ELISA: 1/5000. Not yet tested in other applications.
<b>Concentration</b>	1 mg/ml
<b>Purity</b>	≥90%
<b>Storage Stability</b>	-20°C/1 year
<b>Synonyms</b>	NMBR; Neuromedin-B receptor; NMB-R; Epididymis tissue protein Li 185a; Neuromedin-B-preferring bombesin receptor
<b>Observed Band</b>	43kD
<b>Cell Pathway</b>	Cell membrane ; Multi-pass membrane protein .
<b>Tissue Specificity</b>	Expressed in epididymis (at protein level).
<b>Function</b>	function:Receptor for neuromedin-B.,similarity:Belongs to the G-protein coupled receptor 1 family.,
<b>Background</b>	This gene encodes a 7-transmembrane G protein-coupled receptor that binds neuromedin B, which is a growth factor and mitogen for gastrointestinal epithelial tissue and for normal and neoplastic lung. This receptor may play a role in smooth muscle contraction, neuronal responses, and the regulation of cell growth. Antagonists of this receptor have a potential therapeutic use in inhibiting tumor cell growth. Polymorphisms in this gene may be associated with a susceptibility for schizophrenia. Alternative splicing of this gene results in multiple transcript

Nanjing BYabscience technology Co.,Ltd



variants. [provided by RefSeq, Apr 2016],

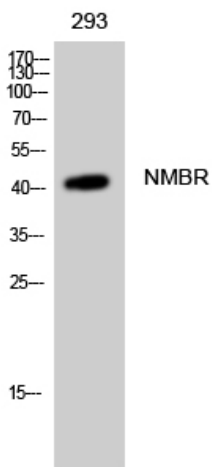
**matters needing attention**

Avoid repeated freezing and thawing!

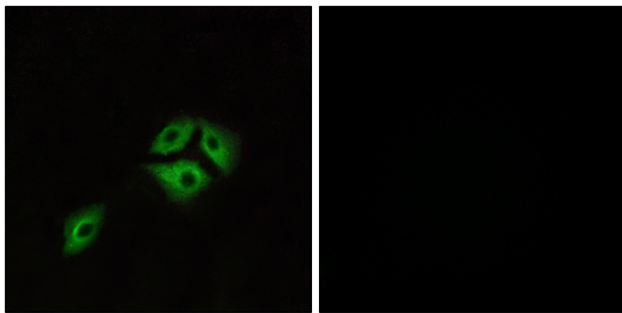
**Usage suggestions**

This product can be used in immunological reaction related experiments. For more information, please consult technical personnel.

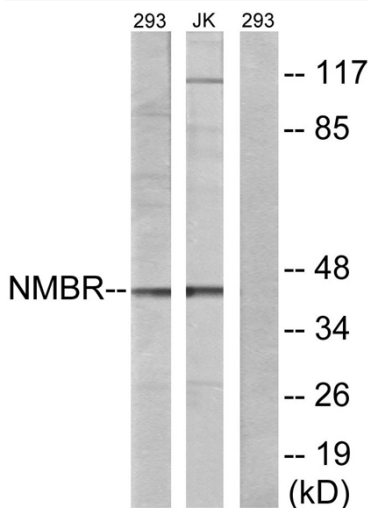
**Products Images**



Western Blot analysis of 293 cells using NMBR Polyclonal Antibody

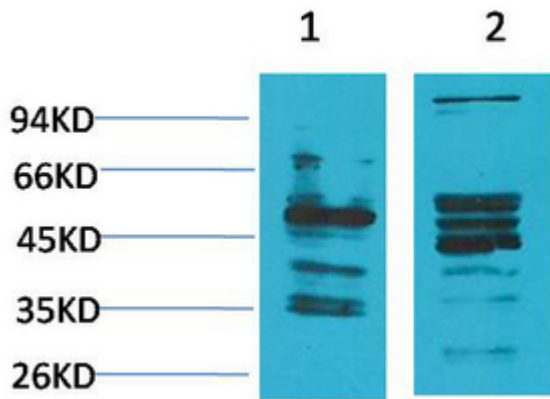


Immunofluorescence analysis of A549 cells, using NMBR Antibody. The picture on the right is blocked with the synthesized peptide.

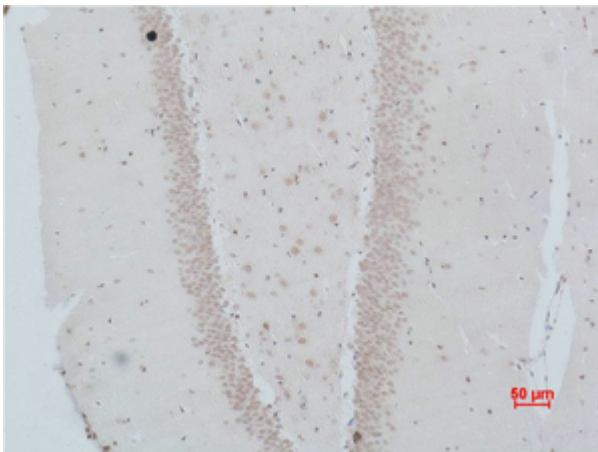


Western blot analysis of lysates from 293 and Jurkat cells, using NMBR Antibody. The lane on the right is blocked with the synthesized peptide.

**Nanjing BYabscience technology Co.,Ltd**



Western blot analysis of 1) Human Brain Tissue, 2) Rat Brain Tissue using NMBR Polyclonal Antibody. Secondary antibody(catalog#:RS0002) was diluted at 1:20000



Immunohistochemical analysis of paraffin-embedded Rat Brain Tissue using NMBR Polyclonal Antibody.