



# NK-2R Polyclonal Antibody

<b>Catalog No</b>	BYab-12770
<b>Isotype</b>	IgG
<b>Reactivity</b>	Human;Rat;Mouse;
<b>Applications</b>	WB;IF;ELISA
<b>Gene Name</b>	TACR2
<b>Protein Name</b>	Substance-K receptor
<b>Immunogen</b>	The antiserum was produced against synthesized peptide derived from human NK2R. AA range:301-350
<b>Specificity</b>	NK-2R Polyclonal Antibody detects endogenous levels of NK-2R protein.
<b>Formulation</b>	Liquid in PBS containing 50% glycerol, 0.5% BSA and 0.02% sodium azide.
<b>Source</b>	Polyclonal, Rabbit,IgG
<b>Purification</b>	The antibody was affinity-purified from rabbit antiserum by affinity-chromatography using epitope-specific immunogen.
<b>Dilution</b>	Western Blot: 1/500 - 1/2000. Immunofluorescence: 1/200 - 1/1000. ELISA: 1/5000. Not yet tested in other applications.
<b>Concentration</b>	1 mg/ml
<b>Purity</b>	≥90%
<b>Storage Stability</b>	-20°C/1 year
<b>Synonyms</b>	TACR2; NK2R; NKNAR; TAC2R; Substance-K receptor; SKR; NK-2 receptor; NK-2R; Neurokinin A receptor; Tachykinin receptor 2
<b>Observed Band</b>	48kD
<b>Cell Pathway</b>	Cell membrane; Multi-pass membrane protein.
<b>Tissue Specificity</b>	Bone marrow,Lung,Stomach,Trachea,
<b>Function</b>	function:This is a receptor for the tachykinin neuropeptide substance K (neurokinin A). It is associated with G proteins that activate a phosphatidylinositol-calcium second messenger system.,miscellaneous:The rank order of affinity of this receptor to tachykinins is: substance K > neuromedin-K > substance P.,similarity:Belongs to the G-protein coupled receptor 1 family.,
<b>Background</b>	This gene belongs to a family of genes that function as receptors for tachykinins. Receptor affinities are specified by variations in the 5' end of the sequence. The receptors belonging to this family are characterized by interactions with G proteins and 7 hydrophobic transmembrane regions. This gene encodes the

Nanjing BYabscience technology Co.,Ltd



receptor for the tachykinin neuropeptide substance K, also referred to as neurokinin A. [provided by RefSeq, Jul 2008],

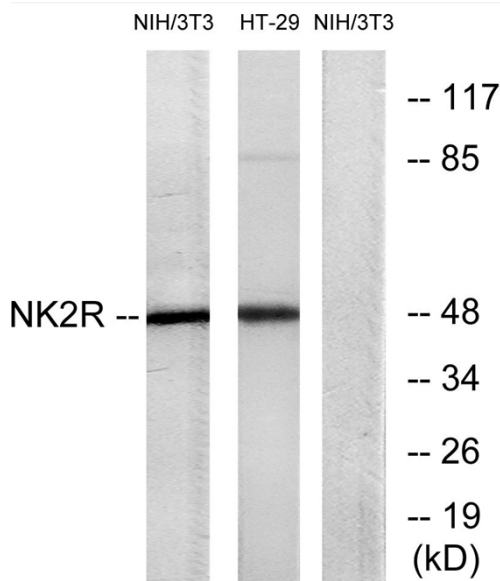
**matters needing attention**

Avoid repeated freezing and thawing!

**Usage suggestions**

This product can be used in immunological reaction related experiments. For more information, please consult technical personnel.

**Products Images**



Western blot analysis of lysates from NIH/3T3 and HT-29 cells, using NK2R Antibody. The lane on the right is blocked with the synthesized peptide.