



NK-1R Polyclonal Antibody

Catalog No	BYab-12769
Isotype	IgG
Reactivity	Human;Mouse;Rat
Applications	WB;IF;ELISA
Gene Name	TACR1
Protein Name	Substance-P receptor
Immunogen	The antiserum was produced against synthesized peptide derived from human NK1R. AA range:211-260
Specificity	NK-1R Polyclonal Antibody detects endogenous levels of NK-1R protein.
Formulation	Liquid in PBS containing 50% glycerol, 0.5% BSA and 0.02% sodium azide.
Source	Polyclonal, Rabbit,IgG
Purification	The antibody was affinity-purified from rabbit antiserum by affinity-chromatography using epitope-specific immunogen.
Dilution	Western Blot: 1/500 - 1/2000. Immunofluorescence: 1/200 - 1/1000. ELISA: 1/5000. Not yet tested in other applications.
Concentration	1 mg/ml
Purity	≥90%
Storage Stability	-20°C/1 year
Synonyms	TACR1; NK1R; TAC1R; Substance-P receptor; SPR; NK-1 receptor; NK-1R; Tachykinin receptor 1
Observed Band	50kD
Cell Pathway	Cell membrane; Multi-pass membrane protein.
Tissue Specificity	Brain,G-protein coupled receptors,Lung,Placenta,
Function	function:This is a receptor for the tachykinin neuropeptide substance P. It is probably associated with G proteins that activate a phosphatidylinositol-calcium second messenger system. The rank order of affinity of this receptor to tachykinins is: substance P > substance K > neuromedin-K.,online information:Tachykinin entry,similarity:Belongs to the G-protein coupled receptor 1 family.,
Background	This gene belongs to a gene family of tachykinin receptors. These tachykinin receptors are characterized by interactions with G proteins and contain seven hydrophobic transmembrane regions. This gene encodes the receptor for the

Nanjing BYabscience technology Co.,Ltd



tachykinin substance P, also referred to as neurokinin 1. The encoded protein is also involved in the mediation of phosphatidylinositol metabolism of substance P. [provided by RefSeq, Sep 2008],

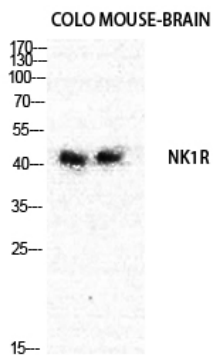
matters needing attention

Avoid repeated freezing and thawing!

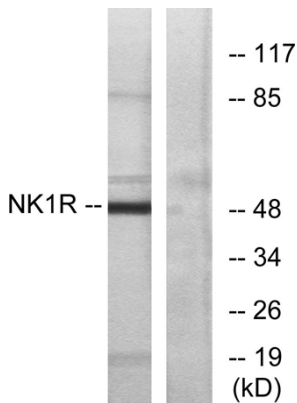
Usage suggestions

This product can be used in immunological reaction related experiments. For more information, please consult technical personnel.

Products Images



Western Blot analysis of MOUSE-BRAIN COLO cells using NK-1R Polyclonal Antibody diluted at 1:1000



Western blot analysis of lysates from Jurkat cells, using NK1R Antibody. The lane on the right is blocked with the synthesized peptide.