



Neuron Navigator 2 Polyclonal Antibody

Catalog No	BYab-12763
Isotype	IgG
Reactivity	Human;Rat;Mouse;
Applications	IHC;IF;ELISA
Gene Name	NAV2
Protein Name	Neuron navigator 2
Immunogen	Synthesized peptide derived from Neuron Navigator 2 . at AA range: 2040-2120
Specificity	Neuron Navigator 2 Polyclonal Antibody detects endogenous levels of Neuron Navigator 2 protein.
Formulation	Liquid in PBS containing 50% glycerol, 0.5% BSA and 0.02% sodium azide.
Source	Polyclonal, Rabbit,IgG
Purification	The antibody was affinity-purified from rabbit antiserum by affinity-chromatography using epitope-specific immunogen.
Dilution	IHC: 1/100 - 1/300. ELISA: 1/10000.. IF 1:50-200
Concentration	1 mg/ml
Purity	≥90%
Storage Stability	-20°C/1 year
Synonyms	NAV2; HELAD1; KIAA1419; POMFIL2; RAINB1; STEERIN2; Neuron navigator 2; Helicase APC down-regulated 1; Pore membrane and/or filament-interacting-like protein 2; Retinoic acid inducible in neuroblastoma 1; Steerin-2; Unc-53 homolog 2; unc53H2
Observed Band	
Cell Pathway	Nucleus .
Tissue Specificity	Highly expressed in the brain, kidney and liver. Also expressed in the thyroid, mammary gland, spinal cord, heart, placenta and lung. Abundantly expressed in colon cancers.
Function	alternative products:Additional isoforms may exist,caution:PubMed:15158073 experiments have been carried out in mouse.,caution:The sequence shown here is derived from an Ensembl automatic analysis pipeline and should be considered as preliminary data.,developmental stage:Highly expressed in the nervous system of developing embryos. Also expressed in fetal heart, liver and kidney.,function:Possesses 3' to 5' helicase activity and exonuclease activity. Involved in neuronal development, specifically in the development of different

Nanjing BYabscience technology Co.,Ltd



sensory organs.,induction:By all-trans retinoic acid (atRA). Up-regulated in colorectal carcinomas.,similarity:Belongs to the Nav/unc-53 family.,similarity:Contains 1 CH (calponin-homology) domain.,tissue specificity:Highly expressed in the brain, kidney and liver. Also expressed in the thyroid, mammary gland, spinal cord, heart, placenta and lung. Abundantly expr

Background

This gene encodes a member of the neuron navigator gene family, which may play a role in cellular growth and migration. Multiple transcript variants encoding different isoforms have been found for this gene. [provided by RefSeq, Oct 2011],

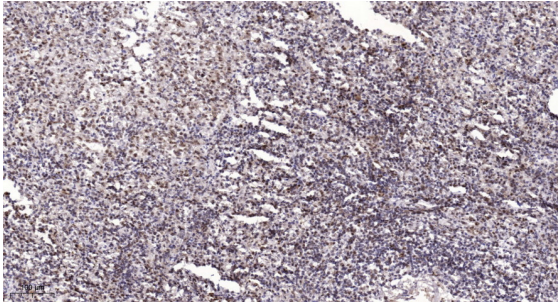
matters needing attention

Avoid repeated freezing and thawing!

Usage suggestions

This product can be used in immunological reaction related experiments. For more information, please consult technical personnel.

Products Images



Immunohistochemical analysis of paraffin-embedded human spleen. 1, Antibody was diluted at 1:200(4° overnight). 2, Tris-EDTA,pH9.0 was used for antigen retrieval. 3,Secondary antibody was diluted at 1:200(room temperature, 45min).