



Neurocan Polyclonal Antibody

Catalog No	BYab-12758
Isotype	IgG
Reactivity	Human;Rat;Mouse;
Applications	WB;IHC
Gene Name	NCAN
Protein Name	Neurocan core protein
Immunogen	Synthesized peptide derived from Neurocan . at AA range: 370-450
Specificity	Neurocan Polyclonal Antibody detects endogenous levels of Neurocan protein.
Formulation	Liquid in PBS containing 50% glycerol, 0.5% BSA and 0.02% sodium azide.
Source	Polyclonal, Rabbit,IgG
Purification	The antibody was affinity-purified from rabbit antiserum by affinity-chromatography using epitope-specific immunogen.
Dilution	WB 1:500-2000;IHC-p 1:50-300
Concentration	1 mg/ml
Purity	≥90%
Storage Stability	-20°C/1 year
Synonyms	NCAN; CSPG3; NEUR; Neurocan core protein; Chondroitin sulfate proteoglycan 3
Observed Band	145kD
Cell Pathway	Secreted .
Tissue Specificity	Brain.
Function	function:May modulate neuronal adhesion and neurite growth during development by binding to neural cell adhesion molecules (NG-CAM and N-CAM). Chondroitin sulfate proteoglycan; binds to hyaluronic acid.,online information:Neurocan,similarity:Belongs to the aggrecan/versican proteoglycan family.,similarity:Contains 1 C-type lectin domain.,similarity:Contains 1 Ig-like V-type (immunoglobulin-like) domain.,similarity:Contains 1 Sushi (CCP/SCR) domain.,similarity:Contains 2 EGF-like domains.,similarity:Contains 2 Link domains.,tissue specificity:Brain.,
Background	Neurocan is a chondroitin sulfate proteoglycan thought to be involved in the modulation of cell adhesion and migration.[supplied by OMIM, Jul 2002],

Nanjing BYabscience technology Co.,Ltd



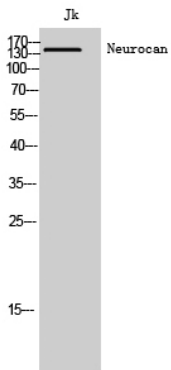
matters needing attention

Avoid repeated freezing and thawing!

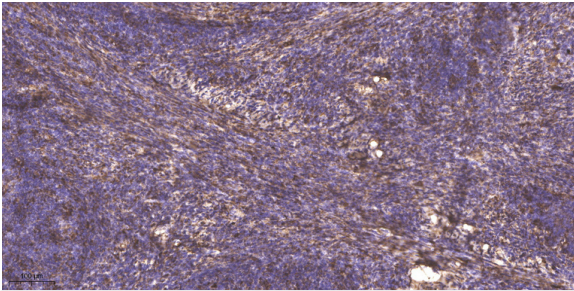
Usage suggestions

This product can be used in immunological reaction related experiments. For more information, please consult technical personnel.

Products Images



Western Blot analysis of Jk cells using Neurocan Polyclonal Antibody



Immunohistochemical analysis of paraffin-embedded human cervical carcinoma. 1, Antibody was diluted at 1:200(4° overnight). 2, Tris-EDTA,pH9.0 was used for antigen retrieval. 3,Secondary antibody was diluted at 1:200(room temperature, 45min).