



Neurocalcin δ Polyclonal Antibody

Catalog No	BYab-12757
Isotype	IgG
Reactivity	Human;Mouse;Rat
Applications	IHC;IF;ELISA
Gene Name	NCALD
Protein Name	Neurocalcin-delta
Immunogen	Synthesized peptide derived from Neurocalcin δ . at AA range: 370-450
Specificity	Neurocalcin δ Polyclonal Antibody detects endogenous levels of Neurocalcin δ protein.
Formulation	Liquid in PBS containing 50% glycerol, 0.5% BSA and 0.02% sodium azide.
Source	Polyclonal, Rabbit,IgG
Purification	The antibody was affinity-purified from rabbit antiserum by affinity-chromatography using epitope-specific immunogen.
Dilution	IHC: 1/100 - 1/300. ELISA: 1/20000.. IF 1:50-200
Concentration	1 mg/ml
Purity	$\geq 90\%$
Storage Stability	-20°C/1 year
Synonyms	NCALD; Neurocalcin-delta
Observed Band	
Cell Pathway	intracellular,cytosol,clathrin coat of trans-Golgi network vesicle,extracellular exosome,
Tissue Specificity	Retina, cerebrum, cerebellum, brain stem, spinal cord, testis, ovary and small intestine.
Function	function:May be involved in the calcium-dependent regulation of rhodopsin phosphorylation. Binds three calcium ions.,similarity:Belongs to the recoverin family.,similarity:Contains 4 EF-hand domains.,tissue specificity:Retina, cerebrum, cerebellum, brain stem, spinal cord, testis, ovary and small intestine.,
Background	This gene encodes a member of the neuronal calcium sensor (NCS) family of calcium-binding proteins. The protein contains an N-terminal myristoylation signal and four EF-hand calcium binding loops. The protein is cytosolic at resting calcium levels; however, elevated intracellular calcium levels induce a conformational change that exposes the myristoyl group, resulting in protein association with membranes and partial co-localization with the perinuclear trans-golgi network. The protein is thought to be a regulator of G protein-coupled receptor signal

Nanjing BYabscience technology Co.,Ltd



transduction. Several alternatively spliced variants of this gene have been determined, all of which encode the same protein; additional variants may exist but their biological validity has not been determined. [provided by RefSeq, Jul 2008],

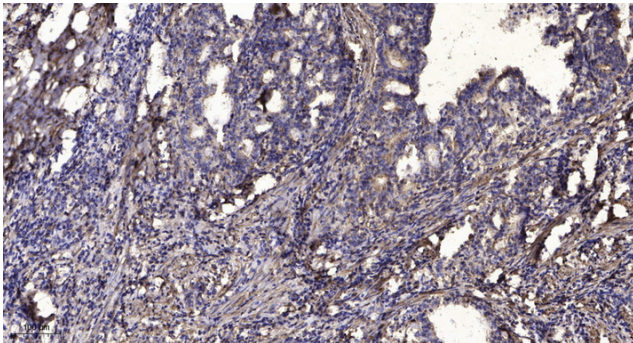
matters needing attention

Avoid repeated freezing and thawing!

Usage suggestions

This product can be used in immunological reaction related experiments. For more information, please consult technical personnel.

Products Images



Immunohistochemical analysis of paraffin-embedded human Gastric adenocarcinoma. 1, Antibody was diluted at 1:200(4° overnight). 2, Tris-EDTA,pH9.0 was used for antigen retrieval. 3,Secondary antibody was diluted at 1:200(room temperature, 45min).