



Neurexophilin-4 Polyclonal Antibody

Catalog No	BYab-12754
Isotype	IgG
Reactivity	Human;Rat
Applications	WB;IHC;IF;ELISA
Gene Name	NXPH4
Protein Name	Neurexophilin-4
Immunogen	The antiserum was produced against synthesized peptide derived from human NXPH4. AA range:216-265
Specificity	Neurexophilin-4 Polyclonal Antibody detects endogenous levels of Neurexophilin-4 protein.
Formulation	Liquid in PBS containing 50% glycerol, 0.5% BSA and 0.02% sodium azide.
Source	Polyclonal, Rabbit,IgG
Purification	The antibody was affinity-purified from rabbit antiserum by affinity-chromatography using epitope-specific immunogen.
Dilution	WB: 1/500 - 1/2000. IHC: 1/100 - 1/300. ELISA: 1/40000.. IF 1:50-200
Concentration	1 mg/ml
Purity	≥90%
Storage Stability	-20°C/1 year
Synonyms	NXPH4; NPH4; Neurexophilin-4
Observed Band	33kD
Cell Pathway	Secreted .
Tissue Specificity	Expressed in brain, spleen, and testis.
Function	function:May be signaling molecules that resemble neuropeptides and that act by binding to alpha-neurexins and possibly other receptors .,PTM:May be proteolytically processed at the boundary between the N-terminal non-conserved and the central conserved domain in neuron-like cells.,similarity:Belongs to the neurexophilin family.,tissue specificity:Expressed in brain, spleen, and testis.,
Background	function:May be signaling molecules that resemble neuropeptides and that act by binding to alpha-neurexins and possibly other receptors .,PTM:May be proteolytically processed at the boundary between the N-terminal non-conserved and the central conserved domain in neuron-like cells.,similarity:Belongs to the neurexophilin family.,tissue specificity:Expressed in brain, spleen, and testis.,

Nanjing BYabscience technology Co.,Ltd



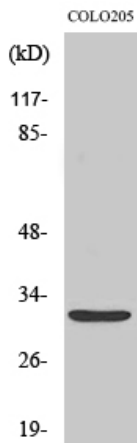
matters needing attention

Avoid repeated freezing and thawing!

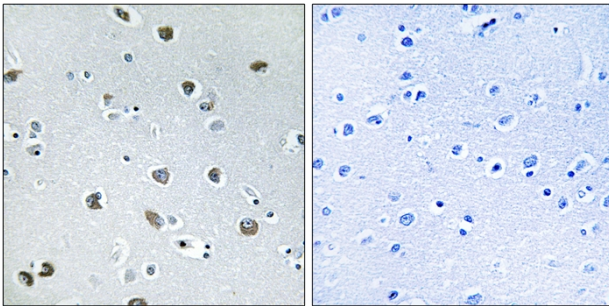
Usage suggestions

This product can be used in immunological reaction related experiments. For more information, please consult technical personnel.

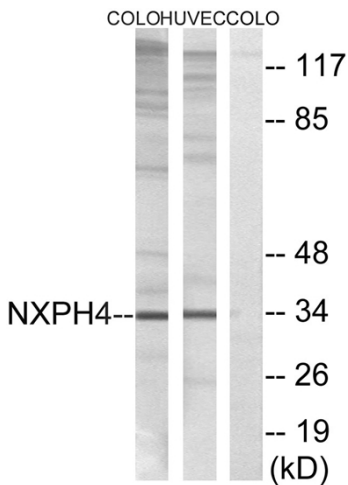
Products Images



Western Blot analysis of various cells using Neurexophilin-4 Polyclonal Antibody



Immunohistochemistry analysis of paraffin-embedded human brain tissue, using NXP4 Antibody. The picture on the right is blocked with the synthesized peptide.



Western blot analysis of lysates from COLO and HUVEC cells, using NXP4 Antibody. The lane on the right is blocked with the synthesized peptide.

Nanjing BYabscience technology Co.,Ltd