



Neurexophilin-1 Polyclonal Antibody

| | |
|---------------------------|---|
| Catalog No | BYab-12752 |
| Isotype | IgG |
| Reactivity | Human;Mouse;Rat |
| Applications | WB;IHC;IF;ELISA |
| Gene Name | NXPH1 |
| Protein Name | Neurexophilin-1 |
| Immunogen | The antiserum was produced against synthesized peptide derived from human NXPH1. AA range:77-126 |
| Specificity | Neurexophilin-1 Polyclonal Antibody detects endogenous levels of Neurexophilin-1 protein. |
| Formulation | Liquid in PBS containing 50% glycerol, 0.5% BSA and 0.02% sodium azide. |
| Source | Polyclonal, Rabbit,IgG |
| Purification | The antibody was affinity-purified from rabbit antiserum by affinity-chromatography using epitope-specific immunogen. |
| Dilution | WB: 1/500 - 1/2000. IHC: 1/100 - 1/300. ELISA: 1/20000.. IF 1:50-200 |
| Concentration | 1 mg/ml |
| Purity | ≥90% |
| Storage Stability | -20°C/1 year |
| Synonyms | NXPH1; NPH1; Nbla00697; Neurexophilin-1 |
| Observed Band | 31kD |
| Cell Pathway | Secreted . |
| Tissue Specificity | Brain,Neuroblastoma, |
| Function | function:May be signaling molecules that resemble neuropeptides and that act by binding to alpha-neurexins and possibly other receptors .,similarity:Belongs to the neurexophilin family., |
| Background | This gene is a member of the neurexophilin family and encodes a secreted protein with a variable N-terminal domain, a highly conserved, N-glycosylated central domain, a short linker region, and a cysteine-rich C-terminal domain. This protein forms a very tight complex with alpha neurexins, a group of proteins that promote adhesion between dendrites and axons. [provided by RefSeq, Jul 2008], |

Nanjing BYabscience technology Co.,Ltd



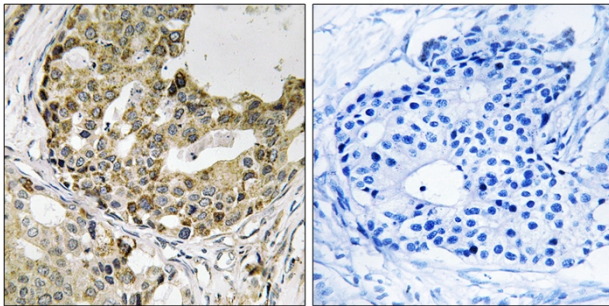
matters needing attention

Avoid repeated freezing and thawing!

Usage suggestions

This product can be used in immunological reaction related experiments. For more information, please consult technical personnel.

Products Images



Immunohistochemistry analysis of paraffin-embedded human breast carcinoma tissue, using NXPH1 Antibody. The picture on the right is blocked with the synthesized peptide.



h

Western blot analysis of lysates from rat heart cells, using NXP1 Antibody. The lane on the right is blocked with the synthesized peptide.

NXP1--



Nanjing BYabscience technology Co.,Ltd

网址: www.njbybio.com

官方热线: 025-5229-8998

监督电话: 15950492658