



Netrin-1 Polyclonal Antibody

Catalog No	BYab-12749
Isotype	IgG
Reactivity	Human;Mouse;Rat;Monkey
Applications	WB;IHC;IF;ELISA
Gene Name	NTN1
Protein Name	Netrin-1
Immunogen	The antiserum was produced against synthesized peptide derived from human Netrin-1. AA range:484-533
Specificity	Netrin-1 Polyclonal Antibody detects endogenous levels of Netrin-1 protein.
Formulation	Liquid in PBS containing 50% glycerol, 0.5% BSA and 0.02% sodium azide.
Source	Polyclonal, Rabbit,IgG
Purification	The antibody was affinity-purified from rabbit antiserum by affinity-chromatography using epitope-specific immunogen.
Dilution	WB: 1/500 - 1/2000. IHC: 1/100 - 1/300. ELISA: 1/40000.. IF 1:50-200
Concentration	1 mg/ml
Purity	≥90%
Storage Stability	-20°C/1 year
Synonyms	NTN1; NTN1L; Netrin-1; Epididymis tissue protein Li 131P
Observed Band	75kD
Cell Pathway	Secreted . Cytoplasm . Mainly secreted. .
Tissue Specificity	Widely expressed in normal adult tissues with highest levels in heart, small intestine, colon, liver and prostate. Reduced expression in brain tumors and neuroblastomas. Expressed in epididymis (at protein level).
Function	disease:Defects in NTN1 are associated with some forms of neuroblastomas.,function:Netrins control guidance of CNS commissural axons and peripheral motor axons. Its association with either DCC or some UNC5 receptors will lead to axon attraction or repulsion, respectively. It also serve as a survival factor via its association with its receptors which prevent the initiation of apoptosis. Involved in colorectal tumorigenesis by regulating apoptosis.,similarity:Contains 1 laminin N-terminal domain.,similarity:Contains 1 NTR domain.,similarity:Contains 3 laminin EGF-like domains.,subunit:Binds to its receptors; DCC, UNC5A, UNC5B, UNC5C and probably UNC5D.,tissue specificity:Widely expressed in normal adult tissues with highest levels in heart,

Nanjing BYabscience technology Co.,Ltd



small intestine, colon, liver and prostate. Reduced expression in brain tumors and neuroblastomas.,

Background

Netrin is included in a family of laminin-related secreted proteins. The function of this gene has not yet been defined; however, netrin is thought to be involved in axon guidance and cell migration during development. Mutations and loss of expression of netrin suggest that variation in netrin may be involved in cancer development. [provided by RefSeq, Jul 2008],

matters needing attention

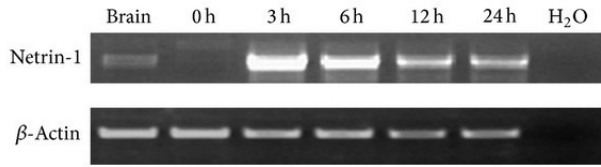
Avoid repeated freezing and thawing!

Usage suggestions

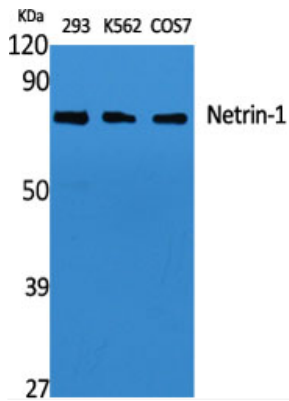
This product can be used in immunological reaction related experiments. For more information, please consult technical personnel.



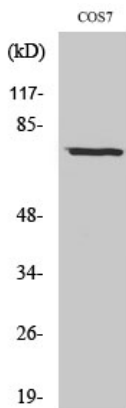
Products Images



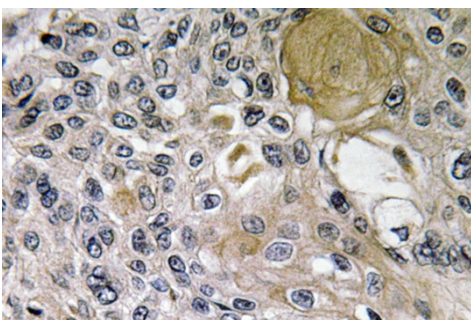
Guo, Xiao-Kai, et al. "The expression of netrin-1 in the thymus and its effects on thymocyte adhesion and migration." *Clinical and Developmental Immunology* 2013 (2013).



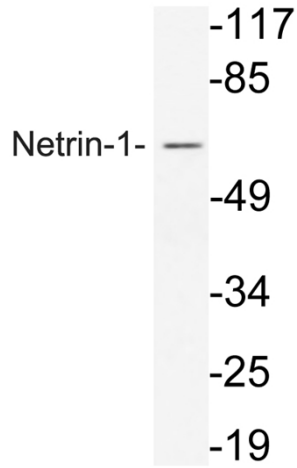
Western Blot analysis of various cells using Netrin-1 Polyclonal Antibody diluted at 1:1000



Western Blot analysis of COS7 cells using Netrin-1 Polyclonal Antibody diluted at 1:1000



Immunohistochemistry analysis of Netrin-1 antibody in paraffin-embedded human lung carcinoma tissue.



Western blot analysis of lysate from COS7 cells, using Netrin-1 antibody.