



# mAChR M1 Polyclonal Antibody

<b>Catalog No</b>	BYab-12740
<b>Isotype</b>	IgG
<b>Reactivity</b>	Human;Mouse;Rat
<b>Applications</b>	WB;ELISA
<b>Gene Name</b>	CHRM1
<b>Protein Name</b>	Muscarinic acetylcholine receptor M1
<b>Immunogen</b>	The antiserum was produced against synthesized peptide derived from human CHRM1. AA range:295-344
<b>Specificity</b>	mAChR M1 Polyclonal Antibody detects endogenous levels of mAChR M1 protein.
<b>Formulation</b>	Liquid in PBS containing 50% glycerol, 0.5% BSA and 0.02% sodium azide.
<b>Source</b>	Polyclonal, Rabbit,IgG
<b>Purification</b>	The antibody was affinity-purified from rabbit antiserum by affinity-chromatography using epitope-specific immunogen.
<b>Dilution</b>	Western Blot: 1/500 - 1/2000. ELISA: 1/5000. Not yet tested in other applications.
<b>Concentration</b>	1 mg/ml
<b>Purity</b>	≥90%
<b>Storage Stability</b>	-20°C/1 year
<b>Synonyms</b>	CHRM1; Muscarinic acetylcholine receptor M1
<b>Observed Band</b>	51kD
<b>Cell Pathway</b>	Cell membrane; Multi-pass membrane protein. Cell junction, synapse, postsynaptic cell membrane; Multi-pass membrane protein.
<b>Tissue Specificity</b>	Amygdala,Brain,
<b>Function</b>	function:The muscarinic acetylcholine receptor mediates various cellular responses, including inhibition of adenylate cyclase, breakdown of phosphoinositides and modulation of potassium channels through the action of G proteins. Primary transducing effect is Pi turnover.,similarity:Belongs to the G-protein coupled receptor 1 family.,subunit:Interacts with GPRASP2.,
<b>Background</b>	The muscarinic cholinergic receptors belong to a larger family of G protein-coupled receptors. The functional diversity of these receptors is defined by the binding of acetylcholine and includes cellular responses such as adenylate cyclase inhibition, phosphoinositide degeneration, and potassium channel mediation. Muscarinic receptors influence many effects of acetylcholine in the

Nanjing BYabscience technology Co.,Ltd



central and peripheral nervous system. The muscarinic cholinergic receptor 1 is involved in mediation of vagally-induced bronchoconstriction and in the acid secretion of the gastrointestinal tract. The gene encoding this receptor is localized to 11q13. [provided by RefSeq, Jul 2008],

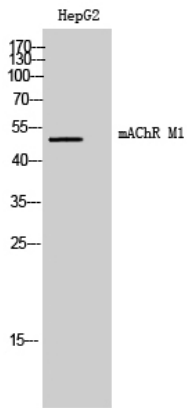
**matters needing attention**

Avoid repeated freezing and thawing!

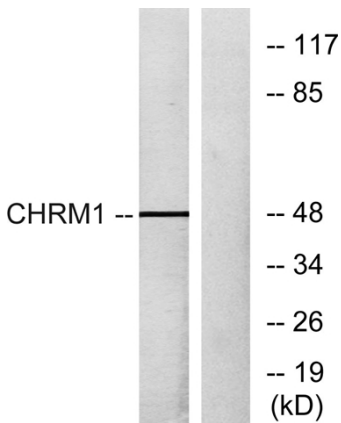
**Usage suggestions**

This product can be used in immunological reaction related experiments. For more information, please consult technical personnel.

**Products Images**



Western Blot analysis of HepG2 cells using mAChR M1 Polyclonal Antibody



Western blot analysis of lysates from HepG2 cells, using CHRM1 Antibody. The lane on the right is blocked with the synthesized peptide.