



LAP1B Polyclonal Antibody

Catalog No	BYab-12739
Isotype	IgG
Reactivity	Human;Rat;Mouse;
Applications	WB;ELISA;IHC
Gene Name	TOR1AIP1
Protein Name	Torsin-1A-interacting protein 1
Immunogen	The antiserum was produced against synthesized peptide derived from human TOR1AIP1. AA range:431-480
Specificity	LAP1B Polyclonal Antibody detects endogenous levels of LAP1B protein.
Formulation	Liquid in PBS containing 50% glycerol, 0.5% BSA and 0.02% sodium azide.
Source	Polyclonal, Rabbit,IgG
Purification	The antibody was affinity-purified from rabbit antiserum by affinity-chromatography using epitope-specific immunogen.
Dilution	WB 1:500-2000;IHC-p 1:50-300; ELISA 2000-20000
Concentration	1 mg/ml
Purity	≥90%
Storage Stability	-20°C/1 year
Synonyms	TOR1AIP1; Torsin-1A-interacting protein 1; Lamin-associated protein 1B; LAP1B
Observed Band	66kD
Cell Pathway	Nucleus inner membrane ; Single-pass membrane protein .
Tissue Specificity	Expressed in muscle, liver and kidney.
Function	function: Binds to A- and B-type lamins. Possible role in membrane attachment and assembly of the nuclear lamina.,PTM: Phosphorylated upon DNA damage, probably by ATM or ATR.,similarity: Belongs to the TOR1AIP family.,subunit: Interacts with TOR1A.,
Background	This gene encodes a type 2 integral membrane protein that binds A- and B-type lamins. The encoded protein localizes to the inner nuclear membrane and may be involved in maintaining the attachment of the nuclear membrane to the nuclear lamina during cell division. Alternate splicing results in multiple transcript variants. [provided by RefSeq, Apr 2016],

Nanjing BYabscience technology Co.,Ltd



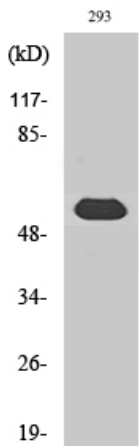
matters needing attention

Avoid repeated freezing and thawing!

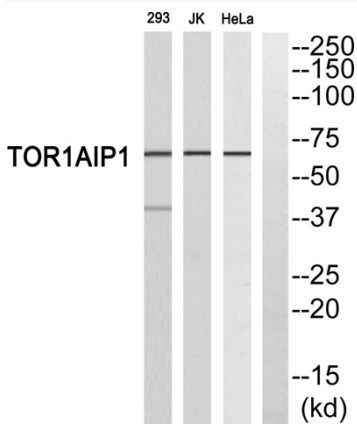
Usage suggestions

This product can be used in immunological reaction related experiments. For more information, please consult technical personnel.

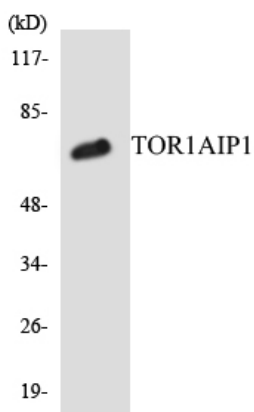
Products Images



Western Blot analysis of various cells using LAP1B Polyclonal Antibody cells nucleus extracted by Minute TM Cytoplasmic and Nuclear Fractionation kit (SC-003, Inventbiotech, MN, USA).

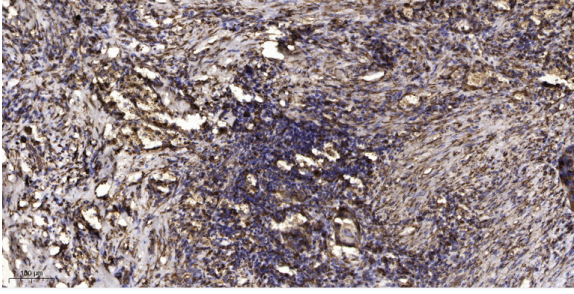


Western blot analysis of TOR1AIP1 Antibody. The lane on the right is blocked with the TOR1AIP1 peptide.



Western blot analysis of the lysates from COLO205 cells using TOR1AIP1 antibody.

Nanjing BYabscience technology Co.,Ltd



Immunohistochemical analysis of paraffin-embedded human Squamous cell carcinoma of lung. 1, Antibody was diluted at 1:200(4° overnight). 2, Tris-EDTA,pH9.0 was used for antigen retrieval. 3,Secondary antibody was diluted at 1:200(room temperature, 45min).