



# Internexin- $\alpha$ Polyclonal Antibody

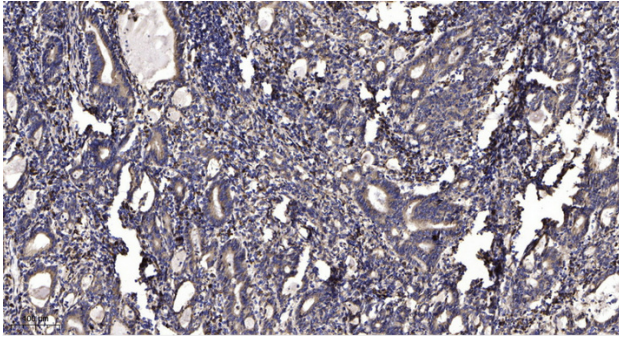
<b>Catalog No</b>	BYab-12737
<b>Isotype</b>	IgG
<b>Reactivity</b>	Human;Mouse;Rat
<b>Applications</b>	WB;IHC
<b>Gene Name</b>	INA
<b>Protein Name</b>	Alpha-internexin
<b>Immunogen</b>	Synthesized peptide derived from the Internal region of human Internexin- $\alpha$ .
<b>Specificity</b>	Internexin- $\alpha$ Polyclonal Antibody detects endogenous levels of Internexin- $\alpha$ protein.
<b>Formulation</b>	Liquid in PBS containing 50% glycerol, 0.5% BSA and 0.02% sodium azide.
<b>Source</b>	Polyclonal, Rabbit,IgG
<b>Purification</b>	The antibody was affinity-purified from rabbit antiserum by affinity-chromatography using epitope-specific immunogen.
<b>Dilution</b>	WB 1:500-2000;IHC-p 1:50-300
<b>Concentration</b>	1 mg/ml
<b>Purity</b>	$\geq 90\%$
<b>Storage Stability</b>	-20°C/1 year
<b>Synonyms</b>	INA; NEF5; Alpha-internexin; Alpha-Inx; 66 kDa neurofilament protein; NF-66; Neurofilament-66; Neurofilament 5
<b>Observed Band</b>	55kD
<b>Cell Pathway</b>	extracellular space,nucleoplasm,neurofilament,nuclear membrane,cytoplasmic ribonucleoprotein granule,myelin sheath,intermediate filament cytoskeleton,
<b>Tissue Specificity</b>	Found predominantly in adult CNS.
<b>Function</b>	developmental stage:Expressed in brain as early as the 16th week of gestation, and increased rapidly and reached a steady state level by the 18th week of gestation.,function:Class-IV neuronal intermediate filament that is able to self-assemble. It is involved in the morphogenesis of neurons. It may form an independent structural network without the involvement of other neurofilaments or it may cooperate with NF-L to form the filamentous backbone to which NF-M and NF-H attach to form the cross-bridges.,PTM:O-glycosylated.,PTM:Phosphorylated upon DNA damage, probably by ATM or ATR.,similarity:Belongs to the intermediate filament family.,tissue specificity:Found predominantly in adult CNS.,

Nanjing BYabscience technology Co.,Ltd



<b>Background</b>	Neurofilaments are type IV intermediate filament heteropolymers composed of light, medium, and heavy chains. Neurofilaments comprise the axoskeleton and they functionally maintain the neuronal caliber. They may also play a role in intracellular transport to axons and dendrites. This gene is a member of the intermediate filament family and is involved in the morphogenesis of neurons. [provided by RefSeq, Jun 2009],
<b>matters needing attention</b>	Avoid repeated freezing and thawing!
<b>Usage suggestions</b>	This product can be used in immunological reaction related experiments. For more information, please consult technical personnel.

## Products Images



Immunohistochemical analysis of paraffin-embedded human Gastric adenocarcinoma. 1, Antibody was diluted at 1:200(4° overnight). 2, Tris-EDTA,pH9.0 was used for antigen retrieval. 3,Secondary antibody was diluted at 1:200(room temperature, 45min).