



# GRIN2 Polyclonal Antibody

<b>Catalog No</b>	BYab-12734
<b>Isotype</b>	IgG
<b>Reactivity</b>	Human;Rat;Mouse;
<b>Applications</b>	WB;IHC;IF;ELISA
<b>Gene Name</b>	GPRIN2
<b>Protein Name</b>	G protein-regulated inducer of neurite outgrowth 2
<b>Immunogen</b>	The antiserum was produced against synthesized peptide derived from human GPRIN2. AA range:11-60
<b>Specificity</b>	GRIN2 Polyclonal Antibody detects endogenous levels of GRIN2 protein.
<b>Formulation</b>	Liquid in PBS containing 50% glycerol, 0.5% BSA and 0.02% sodium azide.
<b>Source</b>	Polyclonal, Rabbit,IgG
<b>Purification</b>	The antibody was affinity-purified from rabbit antiserum by affinity-chromatography using epitope-specific immunogen.
<b>Dilution</b>	WB: 1/500 - 1/2000. IHC: 1/100 - 1/300. ELISA: 1/40000.. IF 1:50-200
<b>Concentration</b>	1 mg/ml
<b>Purity</b>	≥90%
<b>Storage Stability</b>	-20°C/1 year
<b>Synonyms</b>	GPRIN2; KIAA0514; G protein-regulated inducer of neurite outgrowth 2; GRIN2
<b>Observed Band</b>	47kD
<b>Cell Pathway</b>	
<b>Tissue Specificity</b>	Expressed specifically in the cerebellum.
<b>Function</b>	function:May be involved in neurite outgrowth.,subunit:Interacts with activated forms of GNAO1 and GNAZ.,tissue specificity:Expressed specifically in the cerebellum.,
<b>Background</b>	function:May be involved in neurite outgrowth.,subunit:Interacts with activated forms of GNAO1 and GNAZ.,tissue specificity:Expressed specifically in the cerebellum.,
<b>matters needing attention</b>	Avoid repeated freezing and thawing!

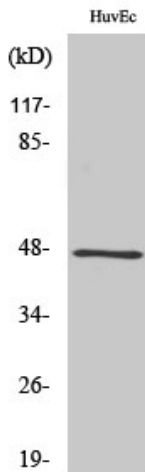
Nanjing BYabscience technology Co.,Ltd



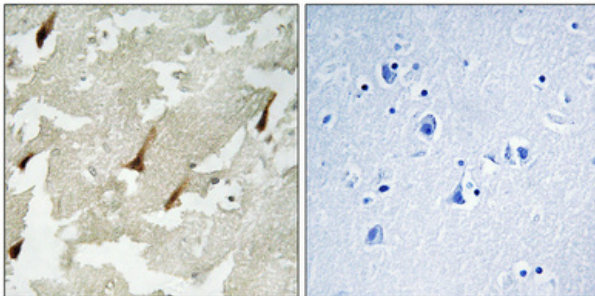
### Usage suggestions

This product can be used in immunological reaction related experiments. For more information, please consult technical personnel.

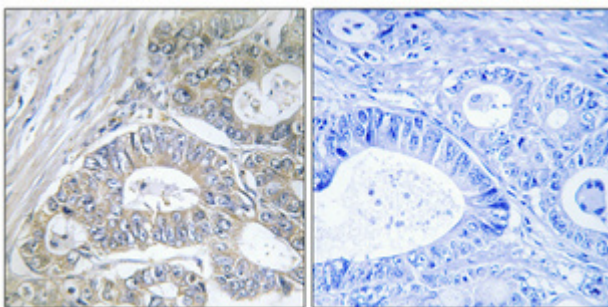
## Products Images



Western Blot analysis of various cells using GRIN2 Polyclonal Antibody



Immunohistochemical analysis of paraffin-embedded Human brain. Antibody was diluted at 1:100(4° overnight). High-pressure and temperature Tris-EDTA,pH8.0 was used for antigen retrieval. Negative contrl (right) obtaned from antibody was pre-absorbed by immunogen peptide.



Immunohistochemical analysis of paraffin-embedded Human colon cancer. Antibody was diluted at 1:100(4° overnight). High-pressure and temperature Tris-EDTA,pH8.0 was used for antigen retrieval. Negative contrl (right) obtaned from antibody was pre-absorbed by immunogen peptide.