



# GFR $\alpha$ -4 Polyclonal Antibody

<b>Catalog No</b>	BYab-12731
<b>Isotype</b>	IgG
<b>Reactivity</b>	Human;Rat;Mouse;
<b>Applications</b>	WB;ELISA
<b>Gene Name</b>	GFRA4
<b>Protein Name</b>	GDNF family receptor alpha-4
<b>Immunogen</b>	The antiserum was produced against synthesized peptide derived from human GFRA4. AA range:141-190
<b>Specificity</b>	GFR $\alpha$ -4 Polyclonal Antibody detects endogenous levels of GFR $\alpha$ -4 protein.
<b>Formulation</b>	Liquid in PBS containing 50% glycerol, 0.5% BSA and 0.02% sodium azide.
<b>Source</b>	Polyclonal, Rabbit,IgG
<b>Purification</b>	The antibody was affinity-purified from rabbit antiserum by affinity-chromatography using epitope-specific immunogen.
<b>Dilution</b>	Western Blot: 1/500 - 1/2000. ELISA: 1/10000. Not yet tested in other applications.
<b>Concentration</b>	1 mg/ml
<b>Purity</b>	$\geq$ 90%
<b>Storage Stability</b>	-20°C/1 year
<b>Synonyms</b>	GFRA4; GDNF family receptor alpha-4; GDNF receptor alpha-4; GDNFR-alpha-4; GFR-alpha-4; Persephin receptor
<b>Observed Band</b>	30kD
<b>Cell Pathway</b>	[Isoform GFRalpha4a]: Cell membrane; Lipid-anchor, GPI-anchor.; [Isoform GFRalpha4b]: Cell membrane; Lipid-anchor, GPI-anchor.; [Isoform GFRalpha4c]: Secreted.
<b>Tissue Specificity</b>	Predominantly expressed in the adult thyroid gland. Low levels also found in fetal adrenal and thyroid glands.
<b>Function</b>	alternative products:Additional isoforms seem to exist,function:Receptor for persephin. Mediates the GDNF-induced autophosphorylation and activation of the RET receptor. May be important in C-cell development and, in the postnatal development of the adrenal medulla.,similarity:Belongs to the GDNFR family.,tissue specificity:Predominantly expressed in the adult thyroid gland. Low levels also found in fetal adrenal and thyroid glands.,
<b>Background</b>	The protein encoded by this gene is a member of the GDNF receptor family. It is a glycosylphosphatidylinositol(GPI)-linked cell surface receptor for persephin, and

Nanjing BYabscience technology Co.,Ltd



mediates activation of the RET tyrosine kinase receptor. This gene is a candidate gene for RET-associated diseases. Alternatively spliced transcript variants encoding different isoforms have been described for this gene. [provided by RefSeq, Jul 2008],

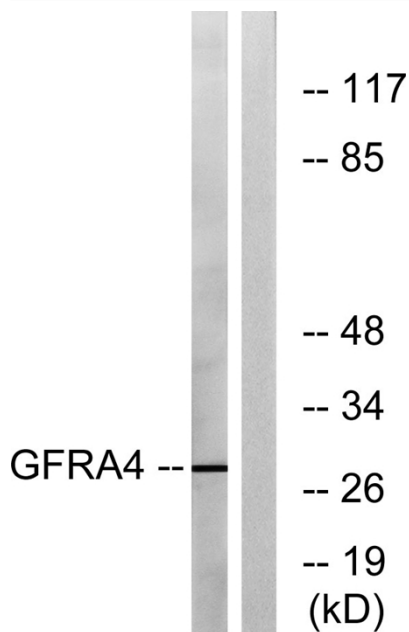
**matters needing attention**

Avoid repeated freezing and thawing!

**Usage suggestions**

This product can be used in immunological reaction related experiments. For more information, please consult technical personnel.

## Products Images



Western blot analysis of lysates from HeLa cells, using GFRA4 Antibody. The lane on the right is blocked with the synthesized peptide.