



Formin 2 Polyclonal Antibody

Catalog No	BYab-12722
Isotype	IgG
Reactivity	Human;Mouse
Applications	IHC;IF;ELISA
Gene Name	FMN2
Protein Name	Formin-2
Immunogen	The antiserum was produced against synthesized peptide derived from human FMN2. AA range:1541-1590
Specificity	Formin 2 Polyclonal Antibody detects endogenous levels of Formin 2 protein.
Formulation	Liquid in PBS containing 50% glycerol, 0.5% BSA and 0.02% sodium azide.
Source	Polyclonal, Rabbit,IgG
Purification	The antibody was affinity-purified from rabbit antiserum by affinity-chromatography using epitope-specific immunogen.
Dilution	IHC: 1/100 - 1/300. ELISA: 1/40000.. IF 1:50-200
Concentration	1 mg/ml
Purity	≥90%
Storage Stability	-20°C/1 year
Synonyms	FMN2; Formin-2
Observed Band	
Cell Pathway	Cytoplasm, cytoskeleton . Cytoplasm, cytosol . Cytoplasm, perinuclear region . Nucleus . Nucleus, nucleolus . Cell membrane ; Peripheral membrane protein ; Cytoplasmic side . Cytoplasmic vesicle membrane ; Peripheral membrane protein ; Cytoplasmic side . Cytoplasm, cell cortex . Colocalizes with the actin cytoskeleton (PubMed:20082305). Recruited to the membranes via its interaction with SPIRE1 (By similarity). Detected at the cleavage furrow during asymmetric oocyte division and polar body extrusion (By similarity). Accumulates in the nucleus following DNA damage (PubMed:26287480). .
Tissue Specificity	Expressed almost exclusively in the developing and mature central nervous system.
Function	PTM:Phosphorylated upon DNA damage, probably by ATM or ATR.,sequence caution:Contaminating sequence. Sequence of unknown origin in the C-terminal part.,similarity:Belongs to the formin homology family. Cappuccino subfamily.,similarity:Contains 1 FH1 (formin homology 1) domain.,similarity:Contains 1 FH2 (formin homology 2) domain.,tissue

Nanjing BYabscience technology Co.,Ltd



specificity: Expressed almost exclusively in the developing and mature central nervous system.,

Background

This gene is a member of the formin homology protein family. The encoded protein is thought to have essential roles in organization of the actin cytoskeleton and in cell polarity. Mutations in this gene have been associated with mental retardation autosomal recessive 47 (MRT47). Alternatively spliced transcript variants have been identified. [provided by RefSeq, Mar 2015],

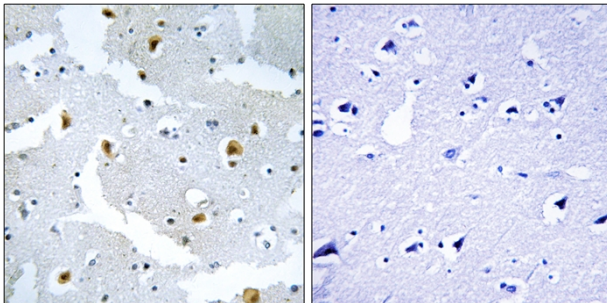
matters needing attention

Avoid repeated freezing and thawing!

Usage suggestions

This product can be used in immunological reaction related experiments. For more information, please consult technical personnel.

Products Images



Immunohistochemistry analysis of paraffin-embedded human brain tissue, using FMN2 Antibody. The picture on the right is blocked with the synthesized peptide.