



Fe65L Polyclonal Antibody

Catalog No	BYab-12721
Isotype	IgG
Reactivity	Human;Mouse
Applications	WB;IHC;IF;ELISA
Gene Name	APBB2
Protein Name	Amyloid beta A4 precursor protein-binding family B member 2
Immunogen	The antiserum was produced against synthesized peptide derived from human APBB2. AA range:471-520
Specificity	Fe65L Polyclonal Antibody detects endogenous levels of Fe65L protein.
Formulation	Liquid in PBS containing 50% glycerol, 0.5% BSA and 0.02% sodium azide.
Source	Polyclonal, Rabbit,IgG
Purification	The antibody was affinity-purified from rabbit antiserum by affinity-chromatography using epitope-specific immunogen.
Dilution	WB: 1/500 - 1/2000. IHC: 1/100 - 1/300. ELISA: 1/40000.. IF 1:50-200
Concentration	1 mg/ml
Purity	≥90%
Storage Stability	-20°C/1 year
Synonyms	APBB2; FE65L; FE65L1; Amyloid beta A4 precursor protein-binding family B member 2; Protein Fe65-like 1
Observed Band	83kD
Cell Pathway	Endoplasmic reticulum . Golgi apparatus . Early endosome .
Tissue Specificity	Widely expressed.
Function	function:May modulate the internalization of beta-amyloid precursor protein.,similarity:Contains 1 WW domain.,similarity:Contains 2 PID domains.,subunit:Binds to the intracellular domain of the beta-amyloid precursor protein.,
Background	amyloid beta precursor protein binding family B member 2(APBB2) Homo sapiens The protein encoded by this gene interacts with the cytoplasmic domains of amyloid beta (A4) precursor protein and amyloid beta (A4) precursor-like protein 2. This protein contains two phosphotyrosine binding (PTB) domains, which are thought to function in signal transduction. Polymorphisms in this gene have been associated with Alzheimer's disease. Alternative splicing results in multiple

Nanjing BYabscience technology Co.,Ltd



transcript variants. [provided by RefSeq, Oct 2009],

matters needing attention

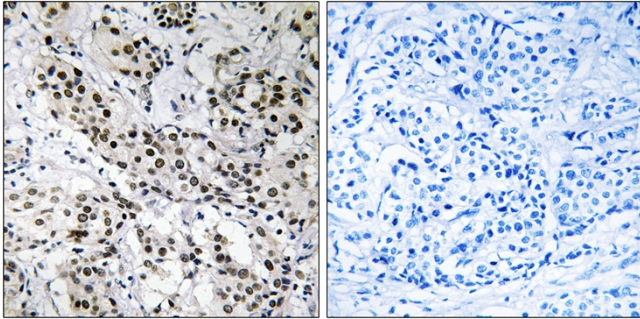
Avoid repeated freezing and thawing!

Usage suggestions

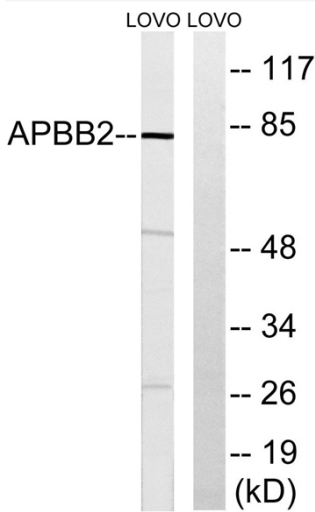
This product can be used in immunological reaction related experiments. For more information, please consult technical personnel.



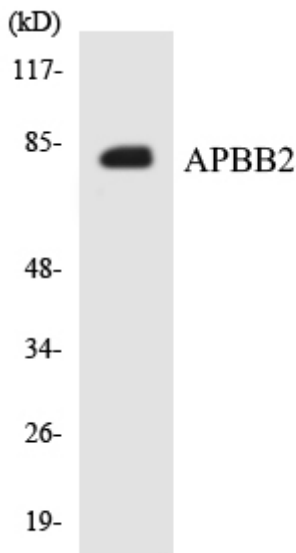
Products Images



Immunohistochemistry analysis of paraffin-embedded human breast carcinoma tissue, using APBB2 Antibody. The picture on the right is blocked with the synthesized peptide.



Western blot analysis of lysates from LOVO cells, using APBB2 Antibody. The lane on the right is blocked with the synthesized peptide.



Western blot analysis of the lysates from HepG2 cells using APBB2 antibody.