



DOR-1 Polyclonal Antibody

| | |
|---------------------------|--|
| Catalog No | BYab-12714 |
| Isotype | IgG |
| Reactivity | Human;Mouse;Rat;Monkey |
| Applications | WB;IHC;IF;ELISA |
| Gene Name | OPRD1 |
| Protein Name | Delta-type opioid receptor |
| Immunogen | The antiserum was produced against synthesized peptide derived from human Opioid Receptor-delta. AA range:323-372 |
| Specificity | DOR-1 Polyclonal Antibody detects endogenous levels of DOR-1 protein. |
| Formulation | Liquid in PBS containing 50% glycerol, 0.5% BSA and 0.02% sodium azide. |
| Source | Polyclonal, Rabbit,IgG |
| Purification | The antibody was affinity-purified from rabbit antiserum by affinity-chromatography using epitope-specific immunogen. |
| Dilution | WB: 1/500 - 1/2000. IHC: 1/100 - 1/300. ELISA: 1/20000.. IF 1:50-200 |
| Concentration | 1 mg/ml |
| Purity | ≥90% |
| Storage Stability | -20°C/1 year |
| Synonyms | OPRD1; OPRD; Delta-type opioid receptor; D-OR-1; DOR-1 |
| Observed Band | 40kD |
| Cell Pathway | Cell membrane ; Multi-pass membrane protein . |
| Tissue Specificity | Detected in oocytes (at protein level). Detected in brain cortex, hypothalamus, hippocampus and olfactory bulb. Detected in oocytes. |
| Function | function:Inhibits neurotransmitter release by reducing calcium ion currents and increasing potassium ion conductance. Highly stereoselective. receptor for enkephalins.,online information:Delta opioid receptor entry,similarity:Belongs to the G-protein coupled receptor 1 family.,subunit:Interacts with GPRASP1., |
| Background | function:Inhibits neurotransmitter release by reducing calcium ion currents and increasing potassium ion conductance. Highly stereoselective. receptor for enkephalins.,online information:Delta opioid receptor entry,similarity:Belongs to the G-protein coupled receptor 1 family.,subunit:Interacts with GPRASP1., |

Nanjing BYabscience technology Co.,Ltd



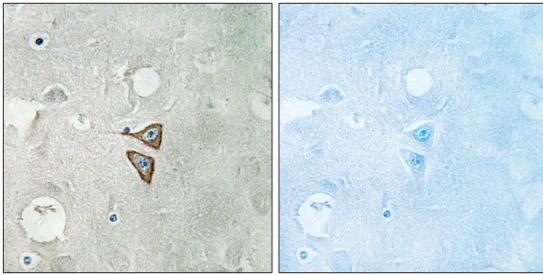
matters needing attention

Avoid repeated freezing and thawing!

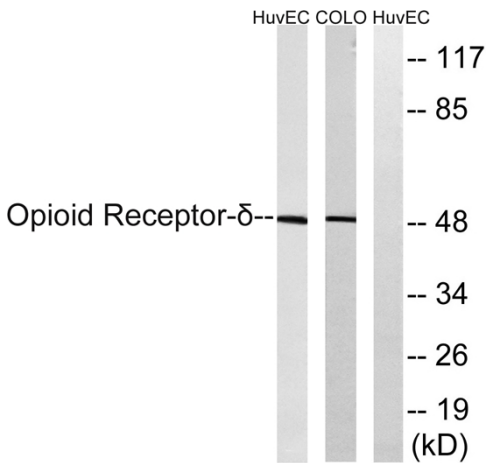
Usage suggestions

This product can be used in immunological reaction related experiments. For more information, please consult technical personnel.

Products Images



Immunohistochemistry analysis of paraffin-embedded human brain tissue, using Opioid Receptor-delta Antibody. The picture on the right is blocked with the synthesized peptide.



Western blot analysis of lysates from HUVEC and COLO205 cells, using Opioid Receptor-delta Antibody. The lane on the right is blocked with the synthesized peptide.