



D4DR Polyclonal Antibody

Catalog No	BYab-12708
Isotype	IgG
Reactivity	Human;Mouse;Rat
Applications	WB;IF;ELISA
Gene Name	DRD4
Protein Name	D(4) dopamine receptor
Immunogen	The antiserum was produced against synthesized peptide derived from human DRD4. AA range:355-404
Specificity	D4DR Polyclonal Antibody detects endogenous levels of D4DR protein.
Formulation	Liquid in PBS containing 50% glycerol, 0.5% BSA and 0.02% sodium azide.
Source	Polyclonal, Rabbit,IgG
Purification	The antibody was affinity-purified from rabbit antiserum by affinity-chromatography using epitope-specific immunogen.
Dilution	Western Blot: 1/500 - 1/2000. Immunofluorescence: 1/200 - 1/1000. ELISA: 1/40000. Not yet tested in other applications.
Concentration	1 mg/ml
Purity	≥90%
Storage Stability	-20°C/1 year
Synonyms	DRD4; D(4) dopamine receptor; D(2C) dopamine receptor; Dopamine D4 receptor
Observed Band	48kD
Cell Pathway	Cell membrane ; Multi-pass membrane protein .
Tissue Specificity	Highly expressed in retina. Detected at much lower levels in brain, in amygdala, thalamus, hypothalamus, cerebellum and pituitary.
Function	function:This is one of the five types (D1 to D5) of receptors for dopamine. The activity of this receptor is mediated by G proteins which inhibit adenylyl cyclase.,polymorphism:The number of repeats of 16 amino acids in the third cytoplasmic loop is highly polymorphic and varies among different alleles. Alleles corresponding in size to a 2 (D4.2), 3 (D4.3), 4 (D4.4), 5 (D4.5), 6 (D4.6), 7 (D4.7) and 9 (D4.9) repeats have been described. The sequence shown is that of allele D4.7. The polymorphic repeat sequence has little influence on DRD4-binding profiles and might not be essential for G protein interaction.,similarity:Belongs to the G-protein coupled receptor 1 family.,subunit:Interacts with CLIC6 (By similarity) and GPRASP1.,

Nanjing BYabscience technology Co.,Ltd



Background

This gene encodes the D4 subtype of the dopamine receptor. The D4 subtype is a G-protein coupled receptor which inhibits adenylyl cyclase. It is a target for drugs which treat schizophrenia and Parkinson disease. Mutations in this gene have been associated with various behavioral phenotypes, including autonomic nervous system dysfunction, attention deficit/hyperactivity disorder, and the personality trait of novelty seeking. This gene contains a polymorphic number (2-10 copies) of tandem 48 nt repeats; the sequence shown contains four repeats. [provided by RefSeq, Jul 2008],

matters needing attention

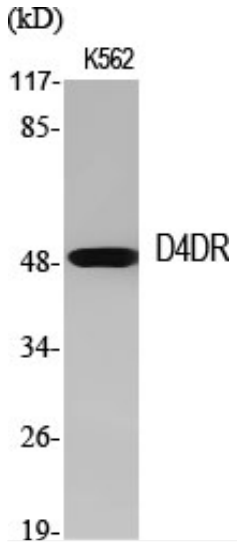
Avoid repeated freezing and thawing!

Usage suggestions

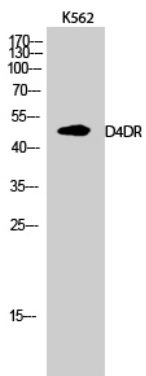
This product can be used in immunological reaction related experiments. For more information, please consult technical personnel.



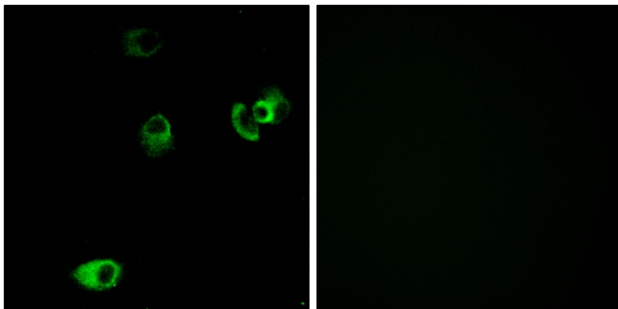
Products Images



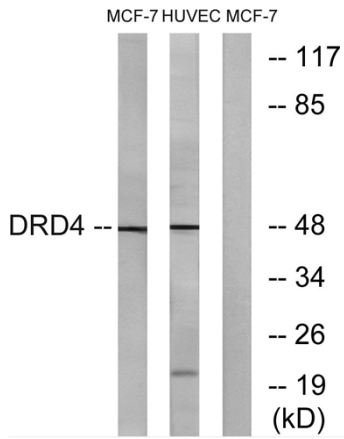
Western Blot analysis of various cells using D4DR Polyclonal Antibody



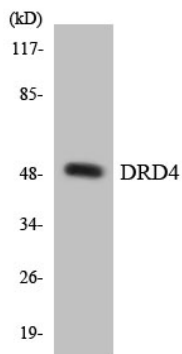
Western Blot analysis of K562 cells using D4DR Polyclonal Antibody



Immunofluorescence analysis of MCF7 cells, using DRD4 Antibody. The picture on the right is blocked with the synthesized peptide.



Western blot analysis of lysates from MCF-7 and HUVEC cells, using DRD4 Antibody. The lane on the right is blocked with the synthesized peptide.



Western blot analysis of the lysates from RAW264.7 cells using DRD4 antibody.