



Cerebellin 4 Polyclonal Antibody

Catalog No	BYab-12701
Isotype	IgG
Reactivity	Human;Mouse;Monkey
Applications	WB;IHC;IF;ELISA
Gene Name	CBLN4
Protein Name	Cerebellin-4
Immunogen	The antiserum was produced against synthesized peptide derived from human CBLN4. AA range:141-190
Specificity	Cerebellin 4 Polyclonal Antibody detects endogenous levels of Cerebellin 4 protein.
Formulation	Liquid in PBS containing 50% glycerol, 0.5% BSA and 0.02% sodium azide.
Source	Polyclonal, Rabbit,IgG
Purification	The antibody was affinity-purified from rabbit antiserum by affinity-chromatography using epitope-specific immunogen.
Dilution	WB: 1/500 - 1/2000. IHC: 1/100 - 1/300. ELISA: 1/40000.. IF 1:50-200
Concentration	1 mg/ml
Purity	≥90%
Storage Stability	-20°C/1 year
Synonyms	CBLN4; CBLNL1; Cerebellin-4; Cerebellin-like glycoprotein 1
Observed Band	27kD
Cell Pathway	Secreted . Cell junction, synapse . Detected at GABAergic synapses. .
Tissue Specificity	Brain,
Function	function:May be involved in synaptic functions in the CNS. Can enable ER export and secretion of CBLN3.,similarity:Contains 1 C1q domain.,subunit:Homo-hexamers; disulfide-linked homotrimers. The trimers are assembled via the globular C1q domains. The trimers associate via N-terminal cysteine residues to form disulfide-linked hexamers. May interact with CBLN1, CBLN2 and CBLN3.,
Background	This gene encodes a member of a family of small secreted proteins containing C1Q domains. Members of this family are involved in regulation of neuroligin signalling during synapse development. The mouse homolog of the protein encoded by this gene competes with netrin to bind to the deleted in colorectal

Nanjing BYabscience technology Co.,Ltd



cancer receptor. [provided by RefSeq, Aug 2012],

matters needing attention

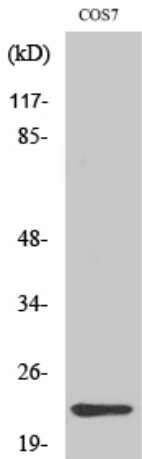
Avoid repeated freezing and thawing!

Usage suggestions

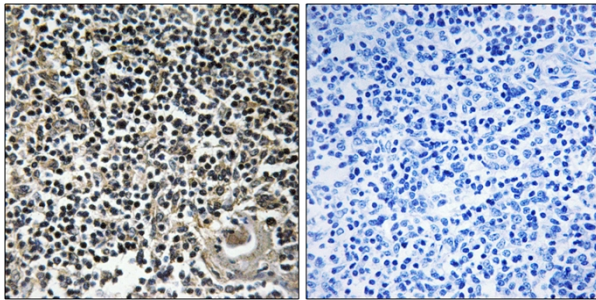
This product can be used in immunological reaction related experiments. For more information, please consult technical personnel.



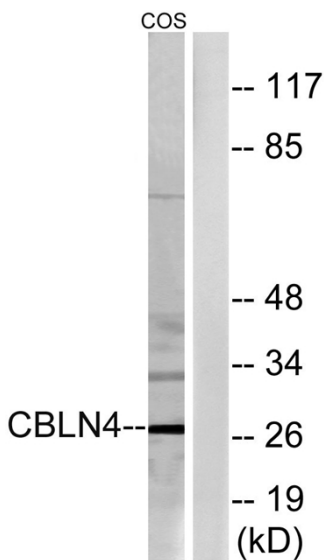
Products Images



Western Blot analysis of various cells using Cerebellin 4 Polyclonal Antibody



Immunohistochemistry analysis of paraffin-embedded human thymus gland tissue, using CBLN4 Antibody. The picture on the right is blocked with the synthesized peptide.



Western blot analysis of lysates from COS cells, using CBLN4 Antibody. The lane on the right is blocked with the synthesized peptide.