



CASPR3 Polyclonal Antibody

Catalog No	BYab-12697
Isotype	IgG
Reactivity	Human;Rat;Mouse;
Applications	IHC;IF;ELISA
Gene Name	CNTNAP3
Protein Name	Contactin-associated protein-like 3
Immunogen	Synthesized peptide derived from the C-terminal region of human CASPR3.
Specificity	CASPR3 Polyclonal Antibody detects endogenous levels of CASPR3 protein.
Formulation	Liquid in PBS containing 50% glycerol, 0.5% BSA and 0.02% sodium azide.
Source	Polyclonal, Rabbit,IgG
Purification	The antibody was affinity-purified from rabbit antiserum by affinity-chromatography using epitope-specific immunogen.
Dilution	IHC: 1/100 - 1/300. ELISA: 1/10000.. IF 1:50-200
Concentration	1 mg/ml
Purity	≥90%
Storage Stability	-20°C/1 year
Synonyms	CNTNAP3; CASPR3; KIAA1714; Contactin-associated protein-like 3; Cell recognition molecule Caspr3
Observed Band	
Cell Pathway	[Isoform 1]: Cell membrane ; Single-pass type I membrane protein .; [Isoform 2]: Secreted .
Tissue Specificity	Brain,Human fetal brain,Prostate,
Function	similarity:Belongs to the neurexin family.,similarity:Contains 1 F5/8 type C domain.,similarity:Contains 1 fibrinogen C-terminal domain.,similarity:Contains 2 EGF-like domains.,similarity:Contains 4 laminin G-like domains.,
Background	The protein encoded by this gene belongs to the NCP family of cell-recognition molecules. This family represents a distinct subgroup of the neurexins. NCP proteins mediate neuron-glia interactions in vertebrates and glial-glia contact in invertebrates. The protein encoded by this gene may play a role in cell recognition within the nervous system. Alternatively spliced transcript variants encoding different isoforms have been described but their biological nature has not been determined. [provided by RefSeq, Jul 2008],

Nanjing BYabscience technology Co.,Ltd



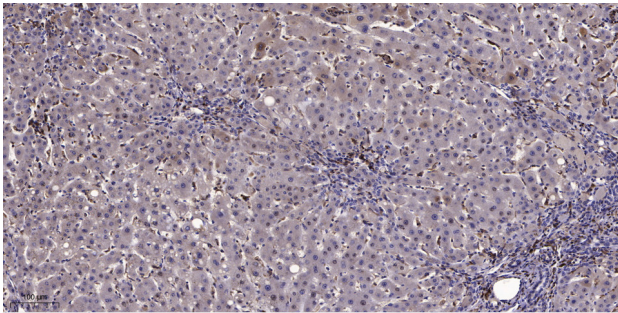
matters needing attention

Avoid repeated freezing and thawing!

Usage suggestions

This product can be used in immunological reaction related experiments. For more information, please consult technical personnel.

Products Images



Immunohistochemical analysis of paraffin-embedded human liver cancer. 1, Antibody was diluted at 1:200(4° overnight). 2, Tris-EDTA,pH9.0 was used for antigen retrieval. 3,Secondary antibody was diluted at 1:200(room temperature, 45min).