



Cables1 Polyclonal Antibody

Catalog No	BYab-12691
Isotype	IgG
Reactivity	Human;Mouse
Applications	WB;IHC;IF;ELISA
Gene Name	CABLES1
Protein Name	CDK5 and ABL1 enzyme substrate 1
Immunogen	The antiserum was produced against synthesized peptide derived from human Ik3-1. AA range:561-610
Specificity	Cables1 Polyclonal Antibody detects endogenous levels of Cables1 protein.
Formulation	Liquid in PBS containing 50% glycerol, 0.5% BSA and 0.02% sodium azide.
Source	Polyclonal, Rabbit,IgG
Purification	The antibody was affinity-purified from rabbit antiserum by affinity-chromatography using epitope-specific immunogen.
Dilution	Western Blot: 1/500 - 1/2000. Immunohistochemistry: 1/100 - 1/300. Immunofluorescence: 1/200 - 1/1000. ELISA: 1/20000. Not yet tested in other applications.
Concentration	1 mg/ml
Purity	≥90%
Storage Stability	-20°C/1 year
Synonyms	CABLES1; CABLES; CDK5 and ABL1 enzyme substrate 1; Interactor with CDK3 1; Ik3-1
Observed Band	67kD
Cell Pathway	Nucleus . Cytoplasm . Located in the cell body and proximal region of the developing axonal shaft of immature neurons. Located in axonal growth cone, but not in the distal part of the axon shaft or in dendritic growth cone of mature neurons (By similarity). .
Tissue Specificity	Expressed in breast, pancreas, colon, head and neck (at protein level). Strongly decreased in more than half of cases of atypical endometrial hyperplasia and in more than 90% of endometrial cancers.
Function	developmental stage:Expression in the endometrial epithelium fluctuates during the menstrual cycle, being greater during the secretory phase when compared with the proliferative phase.,disease:Defects in CABLES1 are associated with some colon and squamous cancers.,function:Cyclin-dependent kinase binding protein. Enhances cyclin-dependent kinase tyrosine phosphorylation by nonreceptor tyrosine kinases, such as that of CDK5 by activated ABL1, which

Nanjing BYabscience technology Co.,Ltd



leads to increased CDK5 activity and is critical for neuronal development, and that of CDK2 by WEE1, which leads to decreased CDK2 activity and growth inhibition. Positively affects neuronal outgrowth. Plays a role as a regulator for p53/p73-induced cell death.,induction:Up-regulated by progesterone and down-regulated by estrogen in benign endometrium.,PTM:Phosphorylated on Ser-313 by CCNE1/CDK3. Phosphorylated on serine/threonine residues by C

Background

This gene encodes a protein involved in regulation of the cell cycle through interactions with several cyclin-dependent kinases. One study (PMID: 16177568) reported aberrant splicing of transcripts from this gene which results in removal of the cyclin binding domain only in human cancer cells, and reduction in gene expression was shown in colorectal cancers (PMID: 17982127).Multiple transcript variants encoding different isoforms have been found for this gene. [provided by RefSeq, Jan 2012],

matters needing attention

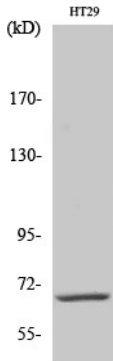
Avoid repeated freezing and thawing!

Usage suggestions

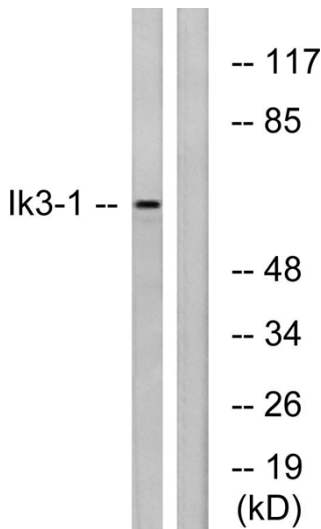
This product can be used in immunological reaction related experiments. For more information, please consult technical personnel.



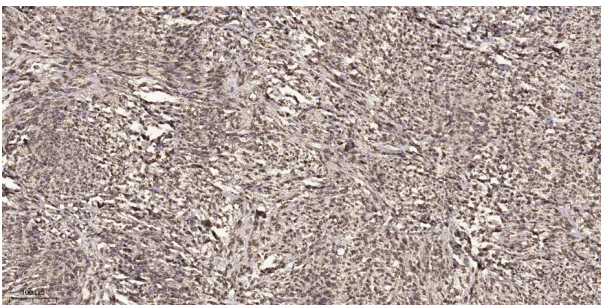
Products Images



Western Blot analysis of various cells using Cables1 Polyclonal Antibody diluted at 1:500



Western blot analysis of lysates from LOVO cells, using Ik3-1 Antibody. The lane on the right is blocked with the synthesized peptide.



Immunohistochemical analysis of paraffin-embedded human small intestinal carcinoma tissue. 1, primary Antibody was diluted at 1:200 (4° overnight). 2, Sodium citrate pH 6.0 was used for antigen retrieval (>98° C, 20min). 3, Secondary antibody was diluted at 1:200