



# BEGAIN Polyclonal Antibody

<b>Catalog No</b>	BYab-12689
<b>Isotype</b>	IgG
<b>Reactivity</b>	Human;Mouse;Rat
<b>Applications</b>	WB;IHC;IF;ELISA
<b>Gene Name</b>	BEGAIN
<b>Protein Name</b>	Brain-enriched guanylate kinase-associated protein
<b>Immunogen</b>	The antiserum was produced against synthesized peptide derived from human BEGAIN. AA range:511-560
<b>Specificity</b>	BEGAIN Polyclonal Antibody detects endogenous levels of BEGAIN protein.
<b>Formulation</b>	Liquid in PBS containing 50% glycerol, 0.5% BSA and 0.02% sodium azide.
<b>Source</b>	Polyclonal, Rabbit,IgG
<b>Purification</b>	The antibody was affinity-purified from rabbit antiserum by affinity-chromatography using epitope-specific immunogen.
<b>Dilution</b>	Western Blot: 1/500 - 1/2000. Immunohistochemistry: 1/100 - 1/300. Immunofluorescence: 1/200 - 1/1000. ELISA: 1/5000. Not yet tested in other applications.
<b>Concentration</b>	1 mg/ml
<b>Purity</b>	≥90%
<b>Storage Stability</b>	-20°C/1 year
<b>Synonyms</b>	BEGAIN; KIAA1446; Brain-enriched guanylate kinase-associated protein
<b>Observed Band</b>	65kD
<b>Cell Pathway</b>	Cytoplasm . Membrane ; Peripheral membrane protein .
<b>Tissue Specificity</b>	Amygdala,Brain,Epithelium,
<b>Function</b>	function:May sustain the structure of the postsynaptic density (PSD).,PTM:Phosphorylated upon DNA damage, probably by ATM or ATR.,subunit:Interacts with DLG4 and DLGAP1 and forms a ternary complex.,
<b>Background</b>	function:May sustain the structure of the postsynaptic density (PSD).,PTM:Phosphorylated upon DNA damage, probably by ATM or ATR.,subunit:Interacts with DLG4 and DLGAP1 and forms a ternary complex.,
<b>matters needing attention</b>	Avoid repeated freezing and thawing!

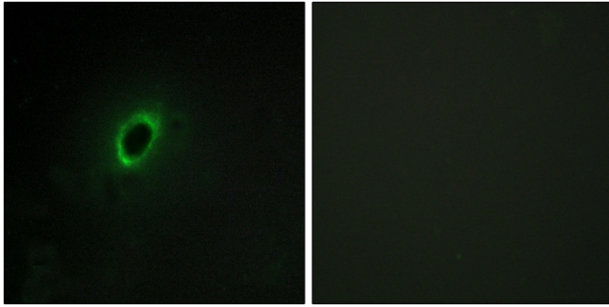
Nanjing BYabscience technology Co.,Ltd



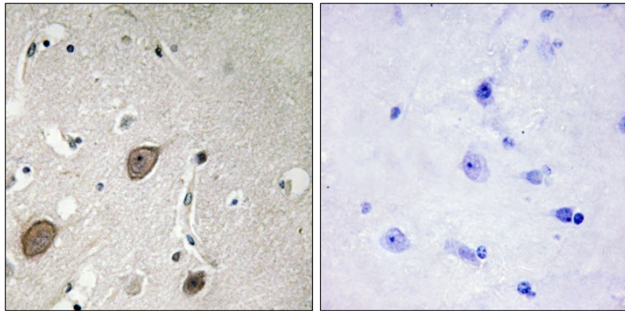
**Usage suggestions**

This product can be used in immunological reaction related experiments. For more information, please consult technical personnel.

**Products Images**



Immunofluorescence analysis of HeLa cells, using BEGIN Antibody. The picture on the right is blocked with the synthesized peptide.



Immunohistochemistry analysis of paraffin-embedded human brain tissue, using BEGIN Antibody. The picture on the right is blocked with the synthesized peptide.