



ALS2CR13 Polyclonal Antibody

Catalog No	BYab-12680
Isotype	IgG
Reactivity	Human;Mouse
Applications	WB;ELISA
Gene Name	FAM117B
Protein Name	Protein FAM117B
Immunogen	The antiserum was produced against synthesized peptide derived from human ALS2CR13. AA range:411-460
Specificity	ALS2CR13 Polyclonal Antibody detects endogenous levels of ALS2CR13 protein.
Formulation	Liquid in PBS containing 50% glycerol, 0.5% BSA and 0.02% sodium azide.
Source	Polyclonal, Rabbit,IgG
Purification	The antibody was affinity-purified from rabbit antiserum by affinity-chromatography using epitope-specific immunogen.
Dilution	Western Blot: 1/500 - 1/2000. ELISA: 1/5000. Not yet tested in other applications.
Concentration	1 mg/ml
Purity	≥90%
Storage Stability	-20°C/1 year
Synonyms	FAM117B; ALS2CR13; Protein FAM117B; Amyotrophic lateral sclerosis 2 chromosomal region candidate gene 13 protein
Observed Band	60kD
Cell Pathway	cytoplasm,
Tissue Specificity	Human salivary gland,Kidney,Skin,
Function	miscellaneous:ALS2CR13 is mapped in the genomic region covering the complete candidate region for Amyotrophic lateral sclerosis 2 (ALS2).,sequence caution:Contaminating sequence. Sequence of unknown origin in the N-terminal part.,
Background	miscellaneous:ALS2CR13 is mapped in the genomic region covering the complete candidate region for Amyotrophic lateral sclerosis 2 (ALS2).,sequence caution:Contaminating sequence. Sequence of unknown origin in the N-terminal part.,

Nanjing BYabscience technology Co.,Ltd



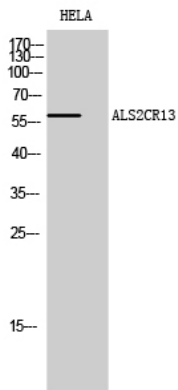
matters needing attention

Avoid repeated freezing and thawing!

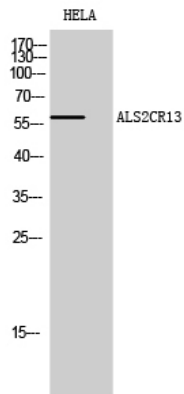
Usage suggestions

This product can be used in immunological reaction related experiments. For more information, please consult technical personnel.

Products Images



Western Blot analysis of HELA cells using ALS2CR13 Polyclonal Antibody diluted at 1:500



Western Blot analysis of HELA cells using ALS2CR13 Polyclonal Antibody diluted at 1:500