



# MOR-1 (phospho Ser375) Polyclonal Antibody

<b>Catalog No</b>	BYab-12655
<b>Isotype</b>	IgG
<b>Reactivity</b>	Human;Mouse;Rat
<b>Applications</b>	WB;IHC;IF;ELISA
<b>Gene Name</b>	OPRM1
<b>Protein Name</b>	Mu-type opioid receptor
<b>Immunogen</b>	The antiserum was produced against synthesized peptide derived from human Opioid Receptor around the phosphorylation site of Ser375. AA range:341-390
<b>Specificity</b>	Phospho-MOR-1 (S375) Polyclonal Antibody detects endogenous levels of MOR-1 protein only when phosphorylated at S375.
<b>Formulation</b>	Liquid in PBS containing 50% glycerol, 0.5% BSA and 0.02% sodium azide.
<b>Source</b>	Polyclonal, Rabbit,IgG
<b>Purification</b>	The antibody was affinity-purified from rabbit antiserum by affinity-chromatography using epitope-specific immunogen.
<b>Dilution</b>	WB: 1/500 - 1/2000. IHC: 1/100 - 1/300. ELISA: 1/20000.. IF 1:50-200
<b>Concentration</b>	1 mg/ml
<b>Purity</b>	≥90%
<b>Storage Stability</b>	-20°C/1 year
<b>Synonyms</b>	OPRM1; MOR1; Mu-type opioid receptor; M-OR-1; MOR-1; Mu opiate receptor; Mu opioid receptor; MOP; hMOP
<b>Observed Band</b>	45kD
<b>Cell Pathway</b>	Cell membrane ; Multi-pass membrane protein . Cell projection, axon . Perikaryon . Cell projection, dendrite . Endosome . Is rapidly internalized after agonist binding. .; [Isoform 12]: Cytoplasm .
<b>Tissue Specificity</b>	Expressed in brain. Isoform 16 and isoform 17 are detected in brain.
<b>Function</b>	function:Inhibits neurotransmitter release by reducing calcium ion currents and increasing potassium ion conductance. Receptor for beta-endorphin..online information:Mu opioid receptor entry,polymorphism:Variant Asp-40 does not show altered binding affinities for most opioid peptides and alkaloids tested, but it binds beta-endorphin, an endogenous opioid that activates the mu opioid receptor, approximately 3 times more tightly than the most common allelic form.,similarity:Belongs to the G-protein coupled receptor 1 family.,subunit:Forms a complex with G(alpha)z/i2 subunits and the RGSZ proteins, RGSZ17 and RGSZ20. The formation of this complex results in mu-opioid receptor

Nanjing BYabscience technology Co.,Ltd



desensitization. Interacts with RGSZ17 and RGSZ20.,

**Background**

This gene encodes one of at least three opioid receptors in humans; the mu opioid receptor (MOR). The MOR is the principal target of endogenous opioid peptides and opioid analgesic agents such as beta-endorphin and enkephalins. The MOR also has an important role in dependence to other drugs of abuse, such as nicotine, cocaine, and alcohol via its modulation of the dopamine system. The NM\_001008503.2:c.118A>G allele has been associated with opioid and alcohol addiction and variations in pain sensitivity but evidence for it having a causal role is conflicting. Multiple transcript variants encoding different isoforms have been found for this gene. Though the canonical MOR belongs to the superfamily of 7-transmembrane-spanning G-protein-coupled receptors some isoforms of this gene have only 6 transmembrane domains. [provided by RefSeq, Oct 2013],

**matters needing attention**

Avoid repeated freezing and thawing!

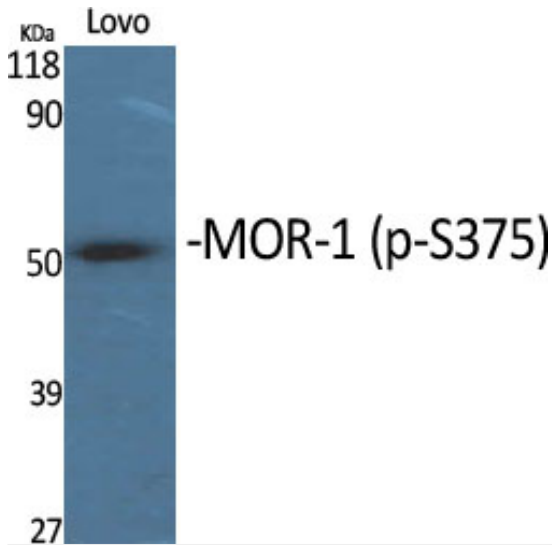
**Usage suggestions**

This product can be used in immunological reaction related experiments. For more information, please consult technical personnel.

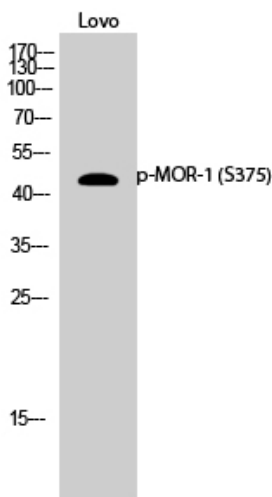
Nanjing BYabscience technology Co.,Ltd



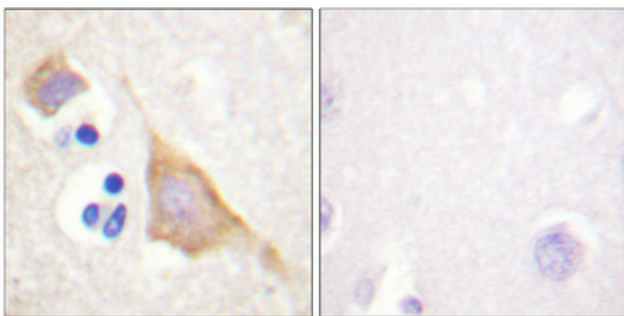
## Products Images



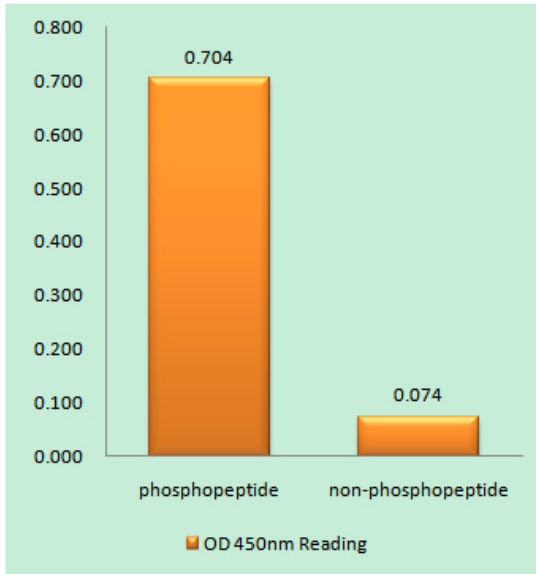
Western Blot analysis of various cells using Phospho-MOR-1 (S375) Polyclonal Antibody



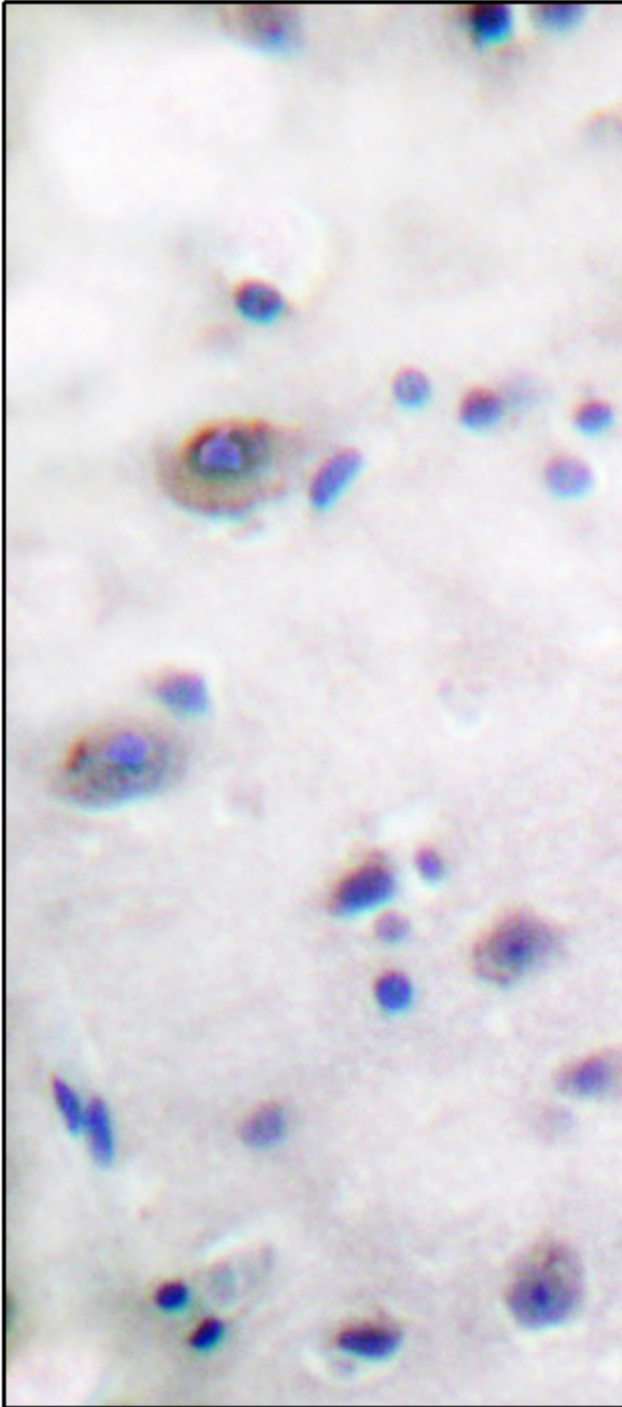
Western Blot analysis of Lovo cells using Phospho-MOR-1 (S375) Polyclonal Antibody



Immunohistochemical analysis of paraffin-embedded Human brain. Antibody was diluted at 1:100(4° overnight). High-pressure and temperature Tris-EDTA,pH8.0 was used for antigen retrieval. Negative contrl (right) obtaned from antibody was pre-absorbed by immunogen peptide.



Enzyme-Linked Immunosorbent Assay (Phospho-ELISA) for Immunogen Phosphopeptide (Phospho-left) and Non-Phosphopeptide (Phospho-right), using Opioid Receptor (Phospho-Ser375) Antibody



Immunohistochemistry analysis of paraffin-embedded human brain, using Opioid Receptor (Phospho-Ser375) Antibody. The picture on the right is blocked with the phospho peptide.