



# CHRDL1 Monoclonal Antibody

<b>Catalog No</b>	BYab-12624
<b>Isotype</b>	IgG
<b>Reactivity</b>	Human;Rat
<b>Applications</b>	WB
<b>Gene Name</b>	CHRDL1
<b>Protein Name</b>	Chordin-like protein 1
<b>Immunogen</b>	Purified recombinant human CHRDL1 protein fragments expressed in E.coli.
<b>Specificity</b>	CHRDL1 Monoclonal Antibody detects endogenous levels of CHRDL1 protein.
<b>Formulation</b>	Purified mouse monoclonal in buffer containing 0.1M Tris-Glycine (pH 7.4, 150 mM NaCl) with 0.2% sodium azide, 50% glycerol.
<b>Source</b>	Monoclonal, Mouse
<b>Purification</b>	Affinity purification
<b>Dilution</b>	Western Blot: 1/1000 - 1/2000. Not yet tested in other applications.
<b>Concentration</b>	1 mg/ml
<b>Purity</b>	≥90%
<b>Storage Stability</b>	-20°C/1 year
<b>Synonyms</b>	CHRDL1; NRLN1; Chordin-like protein 1; Neuralin-1; Neurogenesis-1; Ventroptin
<b>Observed Band</b>	
<b>Cell Pathway</b>	Secreted .
<b>Tissue Specificity</b>	Expressed in the developing cornea and in the eye anterior segment in addition to the retina. Differentially expressed in the fetal brain. There is high expression in cerebellum and neocortex. Expressed in retinal pericytes.
<b>Function</b>	function:Antagonizes the function of BMP4 by binding to it and preventing its interaction with receptors. Alters the fate commitment of neural stem cells from gliogenesis to neurogenesis. Contributes to neuronal differentiation of neural stem cells in the brain by preventing the adoption of a glial fate. May play a crucial role in dorsoventral axis formation. May play a role in embryonic bone formation (By similarity). May also play an important role in regulating retinal angiogenesis through modulation of BMP4 actions in endothelial cells.,induction:By hypoxia in retinal pericytes.,similarity:Contains 3 VWFC domains.,tissue specificity:Expressed in retinal pericytes.,

Nanjing BYabscience technology Co.,Ltd



**Background**

This gene encodes an antagonist of bone morphogenetic protein 4. The encoded protein may play a role in topographic retinotectal projection and in the regulation of retinal angiogenesis in response to hypoxia. Alternatively spliced transcript variants encoding different isoforms have been described. [provided by RefSeq, Jan 2009],

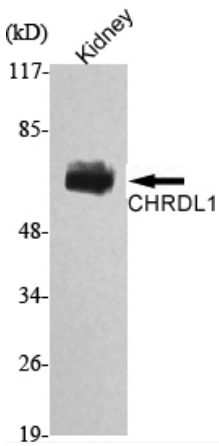
**matters needing attention**

Avoid repeated freezing and thawing!

**Usage suggestions**

This product can be used in immunological reaction related experiments. For more information, please consult technical personnel.

**Products Images**



Western Blot analysis using CHRDL1 Monoclonal Antibody against rat kidney lysate.