



# SAPAP1 Monoclonal Antibody

<b>Catalog No</b>	BYab-12616
<b>Isotype</b>	IgG
<b>Reactivity</b>	Human
<b>Applications</b>	WB;IHC;IF;ELISA
<b>Gene Name</b>	DLGAP1
<b>Protein Name</b>	Disks large-associated protein 1
<b>Immunogen</b>	Purified recombinant fragment of human SAPAP1 expressed in E. Coli.
<b>Specificity</b>	SAPAP1 Monoclonal Antibody detects endogenous levels of SAPAP1 protein.
<b>Formulation</b>	Ascitic fluid containing 0.03% sodium azide,0.5% BSA, 50%glycerol.
<b>Source</b>	Monoclonal, Mouse
<b>Purification</b>	Affinity purification
<b>Dilution</b>	Western Blot: 1/500 - 1/2000. Immunohistochemistry: 1/200 - 1/1000. Immunofluorescence: 1/200 - 1/1000. ELISA: 1/10000. Not yet tested in other applications.
<b>Concentration</b>	1 mg/ml
<b>Purity</b>	≥90%
<b>Storage Stability</b>	-20°C/1 year
<b>Synonyms</b>	DLGAP1; DAP1; GKAP; Disks large-associated protein 1; DAP-1; Guanylate kinase-associated protein; hGKAP; PSD-95/SAP90-binding protein 1; SAP90/PSD-95-associated protein 1; SAPAP1
<b>Observed Band</b>	
<b>Cell Pathway</b>	Cell membrane ; Peripheral membrane protein . Cell junction, synapse, postsynaptic density . Cell junction, synapse .
<b>Tissue Specificity</b>	Expressed in brain.
<b>Function</b>	function:Part of the postsynaptic scaffold in neuronal cells.,similarity:Belongs to the SAPAP family.,subcellular location:Found in postsynaptic density of neuronal cells.,subunit:Interacts with guanylate kinase-like domain of DLG1, DLG2, DLG3, DLG4 and AIP1. Interacts with the PDZ domain of SHANK1, SHANK2 and SHANK3. Found in a complex with DLG4 and SHANK1, SHANK2 or SHANK3. Found in a complex with DLG4 and BEGAIN. Interacts with DYL2 and LRFN1.,tissue specificity:Expressed in brain.,

Nanjing BYabscience technology Co.,Ltd



**Background**

function:Part of the postsynaptic scaffold in neuronal cells.,similarity:Belongs to the SAPAP family.,subcellular location:Found in postsynaptic density of neuronal cells.,subunit:Interacts with guanylate kinase-like domain of DLG1, DLG2, DLG3, DLG4 and AIP1. Interacts with the PDZ domain of SHANK1, SHANK2 and SHANK3. Found in a complex with DLG4 and SHANK1, SHANK2 or SHANK3. Found in a complex with DLG4 and BEGAIN. Interacts with DYL2 and LRFN1.,tissue specificity:Expressed in brain.,

**matters needing attention**

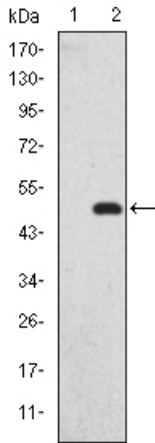
Avoid repeated freezing and thawing!

**Usage suggestions**

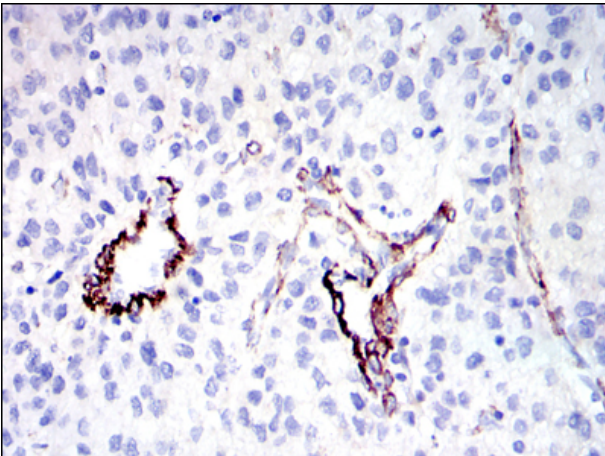
This product can be used in immunological reaction related experiments. For more information, please consult technical personnel.



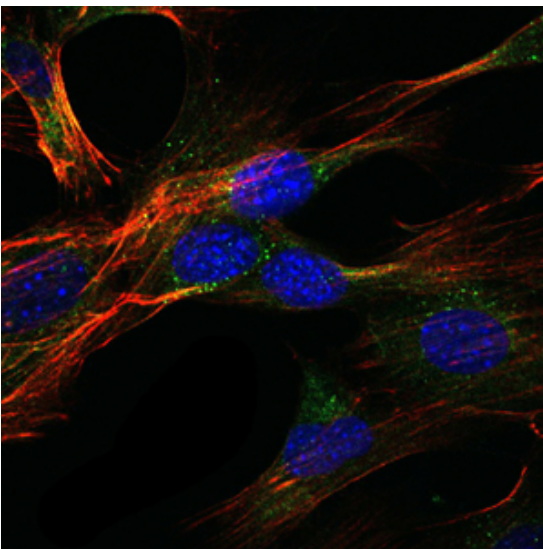
## Products Images



Western Blot analysis using SAPAP1 Monoclonal Antibody against HEK293 (1) and GKAP-hlgGfc transfected HEK293 (2) cell lysate.



Immunohistochemistry analysis of paraffin-embedded human liver cancer tissues with DAB staining using SAPAP1 Monoclonal Antibody.



Immunofluorescence analysis of NIH/3T3 cells using SAPAP1 Monoclonal Antibody (green). Blue: DRAQ5 fluorescent DNA dye. Red: Actin filaments have been labeled with Alexa Fluor-555 phalloidin.

