



KLHL22 Monoclonal Antibody

Catalog No	BYab-12610
Isotype	IgG
Reactivity	Human
Applications	WB;IF;ELISA
Gene Name	KLHL22
Protein Name	Kelch-like protein 22
Immunogen	Purified recombinant fragment of human KLHL22 expressed in E. Coli.
Specificity	KLHL22 Monoclonal Antibody detects endogenous levels of KLHL22 protein.
Formulation	Ascitic fluid containing 0.03% sodium azide,0.5% BSA, 50%glycerol.
Source	Monoclonal, Mouse
Purification	Affinity purification
Dilution	Western Blot: 1/500 - 1/2000. Immunofluorescence: 1/200 - 1/1000. ELISA: 1/10000. Not yet tested in other applications.
Concentration	1 mg/ml
Purity	≥90%
Storage Stability	-20°C/1 year
Synonyms	KLHL22; Kelch-like protein 22
Observed Band	
Cell Pathway	Cytoplasm, cytosol . Cytoplasm, cytoskeleton, microtubule organizing center, centrosome . Cytoplasm, cytoskeleton, spindle . Nucleus . Lysosome . Mainly cytoplasmic in prophase and prometaphase. Associates with the mitotic spindle as the cells reach chromosome bi-orientation. Localizes to the centrosomes shortly before cells enter anaphase After anaphase onset, predominantly associates with the polar microtubules connecting the 2 opposing centrosomes and gradually diffuses into the cytoplasm during telophase (PubMed:23455478). Localizes to the nucleus upon amino acid starvation (PubMed:29769719). Relocalizes to the cytosol and associates with lysosomes when amino acids are available (PubMed:29769719). .
Tissue Specificity	Embryo,Kidney,Liver,
Function	similarity:Contains 1 BTB (POZ) domain.,similarity:Contains 6 Kelch repeats.,
Background	similarity:Contains 1 BTB (POZ) domain.,similarity:Contains 6 Kelch repeats.,

Nanjing BYabscience technology Co.,Ltd



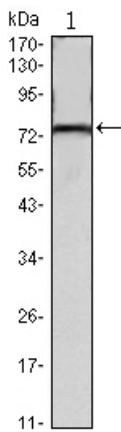
matters needing attention

Avoid repeated freezing and thawing!

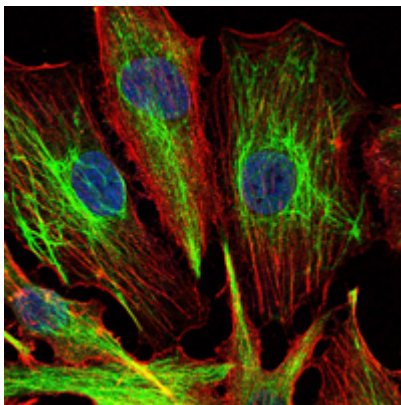
Usage suggestions

This product can be used in immunological reaction related experiments. For more information, please consult technical personnel.

Products Images



Western Blot analysis using KLHL22 Monoclonal Antibody against mouse brain tissues lysate.



Immunofluorescence analysis of U251 cells using KLHL22 Monoclonal Antibody (green). Blue: DRAQ5 fluorescent DNA dye. Red: Actin filaments have been labeled with Alexa Fluor-555 phalloidin.