



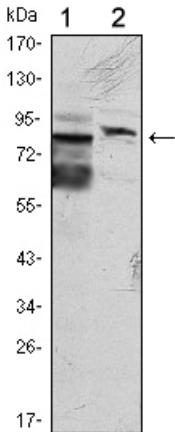
KLHL11 Monoclonal Antibody

Catalog No	BYab-12606
Isotype	IgG
Reactivity	Human
Applications	WB;IHC;IF;ELISA
Gene Name	KLHL11
Protein Name	Kelch-like protein 11
Immunogen	Purified recombinant fragment of human KLHL11 expressed in E. Coli.
Specificity	KLHL11 Monoclonal Antibody detects endogenous levels of KLHL11 protein.
Formulation	Ascitic fluid containing 0.03% sodium azide,0.5% BSA, 50%glycerol.
Source	Monoclonal, Mouse
Purification	Affinity purification
Dilution	Western Blot: 1/500 - 1/2000. Immunohistochemistry: 1/200 - 1/1000. Immunofluorescence: 1/200 - 1/1000. ELISA: 1/10000. Not yet tested in other applications.
Concentration	1 mg/ml
Purity	≥90%
Storage Stability	-20°C/1 year
Synonyms	KLHL11; Kelch-like protein 11
Observed Band	
Cell Pathway	cytoplasm,SCF ubiquitin ligase complex,
Tissue Specificity	Testis,
Function	similarity:Contains 1 BACK (BTB/Kelch associated) domain.,similarity:Contains 1 BTB (POZ) domain.,similarity:Contains 5 Kelch repeats.,
Background	similarity:Contains 1 BACK (BTB/Kelch associated) domain.,similarity:Contains 1 BTB (POZ) domain.,similarity:Contains 5 Kelch repeats.,
matters needing attention	Avoid repeated freezing and thawing!
Usage suggestions	This product can be used in immunological reaction related experiments. For more information, please consult technical personnel.

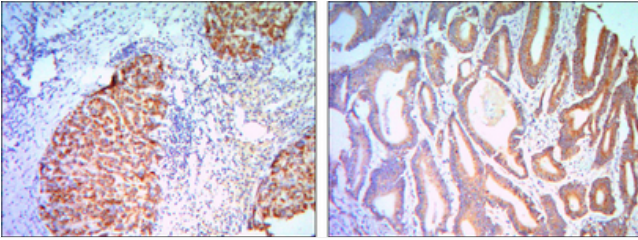
Nanjing BYabscience technology Co.,Ltd



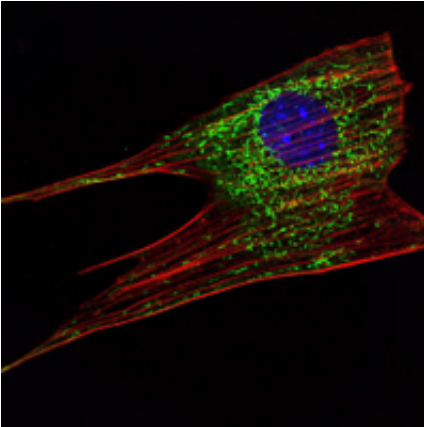
Products Images



Western Blot analysis using KLHL11 Monoclonal Antibody against HeLa (1) and MCF-7 (2) cell lysate.



Immunohistochemistry analysis of paraffin-embedded liver cancer (right) and colon cancer tissues (left) with DAB staining using KLHL11 Monoclonal Antibody.



Immunofluorescence analysis of NIH/3T3 cells using KLHL11 Monoclonal Antibody (green). Blue: DRAQ5 fluorescent DNA dye. Red: Actin filaments have been labeled with Alexa Fluor-555 phalloidin.