



KLHL1 Monoclonal Antibody

Catalog No	BYab-12604
Isotype	IgG
Reactivity	Human
Applications	WB;IF;ELISA
Gene Name	KLHL1
Protein Name	Kelch-like protein 1
Immunogen	Purified recombinant fragment of human KLHL1 expressed in E. Coli.
Specificity	KLHL1 Monoclonal Antibody detects endogenous levels of KLHL1 protein.
Formulation	Ascitic fluid containing 0.03% sodium azide,0.5% BSA, 50%glycerol.
Source	Monoclonal, Mouse
Purification	Affinity purification
Dilution	Western Blot: 1/500 - 1/2000. Immunofluorescence: 1/200 - 1/1000. ELISA: 1/10000. Not yet tested in other applications.
Concentration	1 mg/ml
Purity	≥90%
Storage Stability	-20°C/1 year
Synonyms	KLHL1; KIAA1490; Kelch-like protein 1
Observed Band	
Cell Pathway	Cytoplasm, cytoskeleton.
Tissue Specificity	Highly expressed in brain.
Function	function:May play a role in organizing the actin cytoskeleton of the brain cells.,similarity:Contains 1 BTB (POZ) domain.,similarity:Contains 6 Kelch repeats.,tissue specificity:Highly expressed in brain.,
Background	The KLHL1 protein belongs to a family of actin-organizing proteins related to Drosophila Kelch (Nemes et al., 2000 [PubMed 10888605]).[supplied by OMIM, Feb 2010],
matters needing attention	Avoid repeated freezing and thawing!

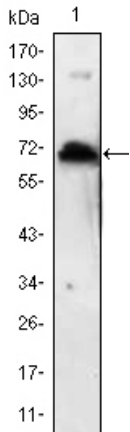
Nanjing BYabscience technology Co.,Ltd



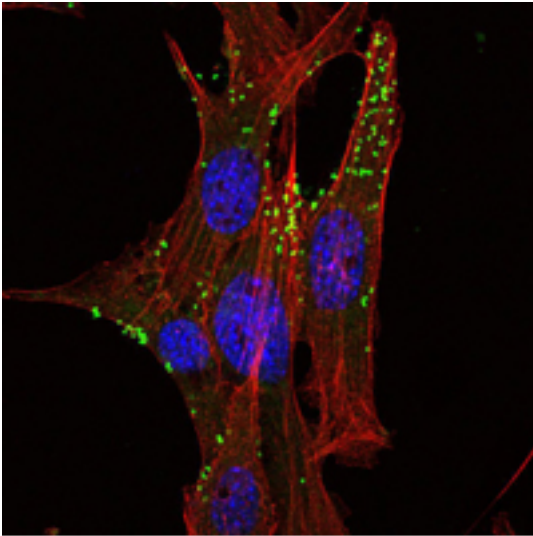
Usage suggestions

This product can be used in immunological reaction related experiments. For more information, please consult technical personnel.

Products Images



Western Blot analysis using KLHL1 Monoclonal Antibody against KLHL1 recombinant protein.



Immunofluorescence analysis of NIH/3T3 cells using KLHL1 Monoclonal Antibody (green). Red: Actin filaments have been labeled with Alexa Fluor-555 phalloidin.

Nanjing BYabscience technology Co.,Ltd