



# Calcyclin Monoclonal Antibody

<b>Catalog No</b>	BYab-12603
<b>Isotype</b>	IgG
<b>Reactivity</b>	Human
<b>Applications</b>	WB;IHC;IF;ELISA
<b>Gene Name</b>	CACYBP
<b>Protein Name</b>	Calcyclin-binding protein
<b>Immunogen</b>	Purified recombinant fragment of Calcyclin expressed in E. Coli.
<b>Specificity</b>	Calcyclin Monoclonal Antibody detects endogenous levels of Calcyclin protein.
<b>Formulation</b>	Purified antibody in PBS containing 0.03% sodium azide.
<b>Source</b>	Monoclonal, Mouse
<b>Purification</b>	Affinity purification
<b>Dilution</b>	WB: 1/500 - 1/2000. IHC: 1/200 - 1/1000. ELISA: 1/10000.. IF 1:50-200
<b>Concentration</b>	1 mg/ml
<b>Purity</b>	≥90%
<b>Storage Stability</b>	-20°C/1 year
<b>Synonyms</b>	CACYBP; S100A6BP; SIP; PNAS-107; Calcyclin-binding protein; CacyBP; hCacyBP; S100A6-binding protein; Siah-interacting protein
<b>Observed Band</b>	
<b>Cell Pathway</b>	Nucleus . Cytoplasm . Cytoplasmic at low calcium concentrations. In neuroblastoma cells, after a retinoic acid (RA) induction and calcium increase, it localizes in both the nucleus and cytoplasm. The nuclear fraction may be phosphorylated.
<b>Tissue Specificity</b>	Brain,Colon carcinoma,Hepatoma,Liver,Promyelocytic leukemia,Skeletal muscle
<b>Function</b>	function:May be involved in calcium-dependent ubiquitination and subsequent proteosomal degradation of target proteins. Probably serves as a molecular bridge in ubiquitin E3 complexes. Participates in the ubiquitin-mediated degradation of beta-catenin (CTNNB1).,PTM:Phosphorylated on serine residues. Phosphorylated upon induction by RA or at high calcium concentrations.,similarity:Contains 1 CS domain.,similarity:Contains 1 SGS domain.,subcellular location:Cytoplasmic at low calcium concentrations. In neuroblastoma cells, after a retinoic acid (RA) induction and calcium increase, it localizes in both the nucleus and cytoplasm. The nuclear fraction may be phosphorylated.,subunit:Interacts with protein of the S100 family S100A1,

Nanjing BYabscience technology Co.,Ltd



S100A6, S100B, S100P and S100A12 at physiological calcium concentrations (By similarity). Component of some large E3 complex at least composed of UBE2D1, SIAH1, CAC

#### Background

The protein encoded by this gene is a calcyclin binding protein. It may be involved in calcium-dependent ubiquitination and subsequent proteosomal degradation of target proteins. It probably serves as a molecular bridge in ubiquitin E3 complexes and participates in the ubiquitin-mediated degradation of beta-catenin. Two alternatively spliced transcript variants encoding different isoforms have been found for this gene. [provided by RefSeq, Jul 2008],

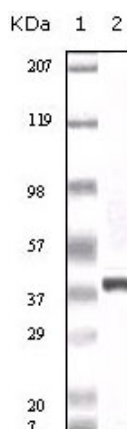
#### matters needing attention

Avoid repeated freezing and thawing!

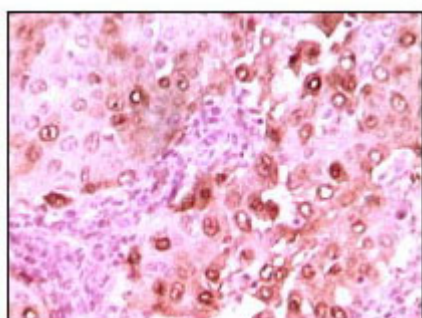
#### Usage suggestions

This product can be used in immunological reaction related experiments. For more information, please consult technical personnel.

## Products Images



Western Blot analysis using Calcyclin Monoclonal Antibody against truncated calcyclin recombinant protein.



Immunohistochemistry analysis of paraffin-embedded human brain glioma tissue showing nuclear localization with DAB staining using Calcyclin Monoclonal Antibody.

Nanjing BYabscience technology Co.,Ltd