



SMARCD1/3 rabbit pAb

Catalog No	BYab-12569
Isotype	IgG
Reactivity	Human; Mouse;Rat
Applications	WB
Gene Name	SMARCD1 BAF60A
Protein Name	SMARCD1/3
Immunogen	Synthesized peptide derived from human SMARCD1/3
Specificity	This antibody detects endogenous levels of SMARCD1/3 at Human, Mouse,Rat
Formulation	Liquid in PBS containing 50% glycerol, and 0.60% sodium azide.
Source	Polyclonal, Rabbit,IgG
Purification	The antibody was affinity-purified from rabbit serum by affinity-chromatography using specific immunogen.
Dilution	WB 1:500-2000
Concentration	1 mg/ml
Purity	≥90%
Storage Stability	-20°C/1 year
Synonyms	SWI/SNF-related matrix-associated actin-dependent regulator of chromatin subfamily D member 1 (60 kDa BRG-1/Brm-associated factor subunit A) (BRG1-associated factor 60A) (BAF60A) (SWI/SNF complex 60 kDa subunit)
Observed Band	55kD
Cell Pathway	Nucleus .
Tissue Specificity	Expressed in all tissues tested, including brain, heart, kidney, liver, lung, muscle, pancreas and placenta.
Function	function:Involved in chromatin remodeling. Has a strong influence on the Vitamin D-mediated transcriptional activity from an enhancer Vitamin D receptor element (VDRE). May be a link between mammalian SWI-SNF-like chromatin remodeling complexes and the vitamin D receptor (VDR) heterodimer. Mediates critical interactions between nuclear receptors and the BRG1/SMARCA4 chromatin-remodeling complex for transactivation. Also involved in vitamin D-coupled transcription regulation via its association with the WINAC complex, a chromatin-remodeling complex recruited by vitamin D receptor (VDR), which is required for the ligand-bound VDR-mediated transrepression of the CYP27B1

Nanjing BYabscience technology Co.,Ltd



gene.,similarity:Belongs to the SMARCD family.,similarity:Contains 1 SWIB domain.,subunit:Component of the BAF complex, which includes at least actin (ACTB), ARID1A, ARID1B/BAF250, SMARCA2, SMARCA4/BRG1, ACTL6A/BAF53, ACTL6B

Background

The protein encoded by this gene is a member of the SWI/SNF family of proteins, whose members display helicase and ATPase activities and which are thought to regulate transcription of certain genes by altering the chromatin structure around those genes. The encoded protein is part of the large ATP-dependent chromatin remodeling complex SNF/SWI and has sequence similarity to the yeast Swp73 protein. Two transcript variants encoding different isoforms have been found for this gene. [provided by RefSeq, Jul 2008],

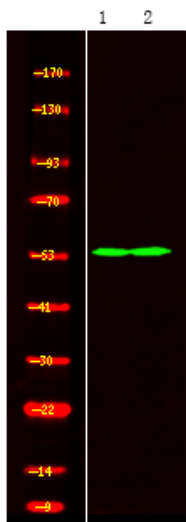
matters needing attention

Avoid repeated freezing and thawing!

Usage suggestions

This product can be used in immunological reaction related experiments. For more information, please consult technical personnel.

Products Images



Western Blot analysis of mouse brain Jurkat cell ,using primary antibody at 1:1000 dilution. Secondary antibody(catalog#:RS23920) was diluted at 1:10000