



TIFA rabbit pAb

Catalog No	BYab-12531
Isotype	IgG
Reactivity	Human; Mouse;Rat
Applications	WB
Gene Name	TIFA T2BP
Protein Name	TIFA
Immunogen	Synthesized peptide derived from human TIFA
Specificity	This antibody detects endogenous levels of TIFA at Human, Mouse,Rat
Formulation	Liquid in PBS containing 50% glycerol, and 0.13% sodium azide.
Source	Polyclonal, Rabbit,IgG
Purification	The antibody was affinity-purified from rabbit serum by affinity-chromatography using specific immunogen.
Dilution	WB 1:500-2000
Concentration	1 mg/ml
Purity	≥90%
Storage Stability	-20°C/1 year
Synonyms	TRAF-interacting protein with FHA domain-containing protein A (Putative MAPK-activating protein PM14) (Putative NF-kappa-B-activating protein 20) (TRAF2-binding protein)
Observed Band	
Cell Pathway	Cytoplasm . Colocalizes with lysosomal marker LAMP2 following homooligomerization and subsequent activation. .
Tissue Specificity	
Function	
Background	
matters needing attention	Avoid repeated freezing and thawing!

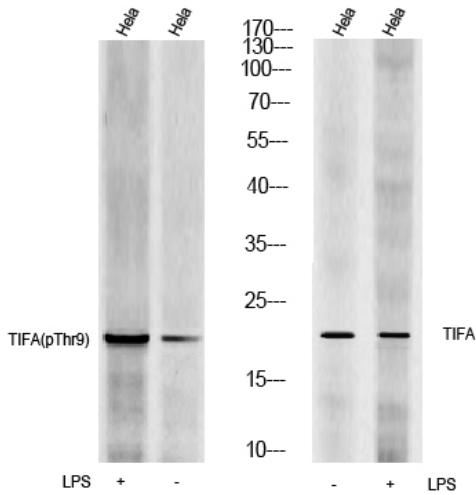
Nanjing BYabscience technology Co.,Ltd



Usage suggestions

This product can be used in immunological reaction related experiments. For more information, please consult technical personnel.

Products Images



Western Blot analysis of cell lysis treated or untreated by LPS 100ng/mL 30min, using primary antibody at 1:1000 dilution. Secondary antibody(catalog#:RS23920) was diluted at 1:10000