



GSDME N-terminal rabbit pAb

Catalog No	BYab-12522
Isotype	IgG
Reactivity	Human;Mouse;Rat
Applications	IF;WB;IHC
Gene Name	GSDME
Protein Name	Gasdermin-E,DFNA5,Dfna5h,EG14210,2310037D07Rik .4932441K13Rik ,ICERE 1,ICERE-1,Deafness, autosomal dominant 5,Non-syndromic hearing impairment protein 5,GSDME-NT
Immunogen	Synthesized peptide derived from human GSDME. AA range:1-100
Specificity	The antibody detects endogenous full length and n-terminal fragment of gsdme protein,
Formulation	Liquid in PBS containing 50% glycerol, and 0.02% sodium azide.
Source	Polyclonal, Rabbit,IgG
Purification	The antibody was affinity-purified from rabbit antiserum by affinity-chromatography using epitope-specific immunogen.
Dilution	IF: 1:50-200 WB: 1:5000-20000 IHC: 1:200-300
Concentration	1 mg/ml
Purity	≥90%
Storage Stability	-20°C/1 year
Synonyms	
Observed Band	36 55kD
Cell Pathway	[Gasdermin-E, N-terminal]: Cell membrane ; Multi-pass membrane protein . ; [Gasdermin-E]: Cytoplasm, cytosol .
Tissue Specificity	Expressed in cochlea (PubMed:9771715). Low level of expression in heart, brain, placenta, lung, liver, skeletal muscle, kidney and pancreas, with highest expression in placenta (PubMed:9771715).
Function	Cleavage at Asp-270 by CASP3 (mature and uncleaved precursor forms) or granzyme B (GZMB) relieves autoinhibition and is sufficient to initiate pyroptosis.
Background	
matters needing attention	Avoid repeated freezing and thawing!

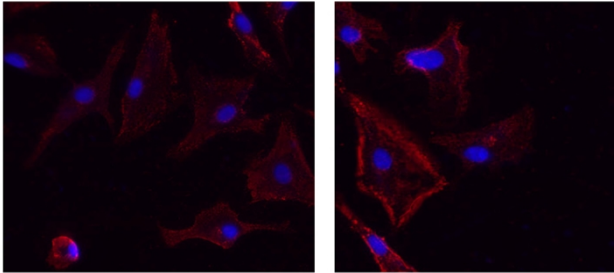
Nanjing BYabscience technology Co.,Ltd



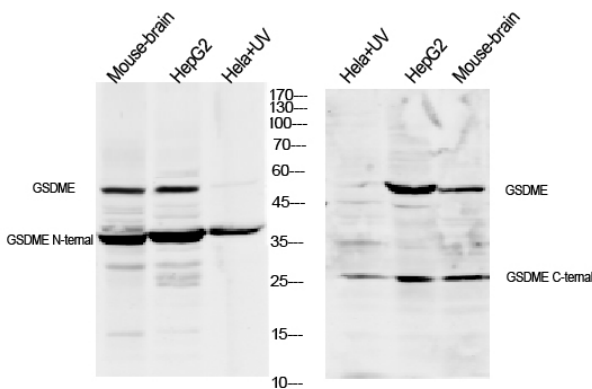
Usage suggestions

This product can be used in immunological reaction related experiments. For more information, please consult technical personnel.

Products Images



Immunofluorescence analysis of un-treated (left) A549 and UV treated(right) A549 cell. 1,primary Antibody was diluted at 1:200(4°C overnight). 2, Goat Anti Rabbit IgG (H&L) - Alexa Fluor 594 Secondary antibody was diluted at 1:1000(room temperature, 50min).3, Picture B: DAPI(blue) 10min.



Western blot analysis of lysates from 1)mouse-brain, 2)Hela cells treated by UV 15min,3) HepG2 cells, primary antibody was diluted at 1:1000, 4°over night, secondary antibody HRP goat anti rabbit (Immunoway:RS0002) was diluted at 1:10000