



# POPD3 rabbit pAb

|                                  |  |
|----------------------------------|--|
| <b>Catalog No</b>                | BYab-12407   |
| <b>Isotype</b>                   | IgG  |
| <b>Reactivity</b>                | Human; Mouse   |
| <b>Applications</b>              | WB;IHC   |
| <b>Gene Name</b>                 | POPDC3 POP3  |
| <b>Protein Name</b>              | POPD3  |
| <b>Immunogen</b>                 | Synthesized peptide derived from human POPD3 AA range: 111-161   |
| <b>Specificity</b>               | This antibody detects endogenous levels of POPD3 at Human/Mouse  |
| <b>Formulation</b>               | Liquid in PBS containing 50% glycerol, 0.5% BSA and 0.02% sodium azide.  |
| <b>Source</b>                    | Polyclonal, Rabbit,IgG   |
| <b>Purification</b>              | The antibody was affinity-purified from rabbit serum by affinity-chromatography using specific immunogen.  |
| <b>Dilution</b>                  | WB 1:500-2000;IHC-p 1:50-300   |
| <b>Concentration</b>             | 1 mg/ml  |
| <b>Purity</b>                    | ≥90%   |
| <b>Storage Stability</b>         | -20°C/1 year   |
| <b>Synonyms</b>                  |  |
| <b>Observed Band</b>             |  |
| <b>Cell Pathway</b>              | Membrane ; Multi-pass membrane protein .   |
| <b>Tissue Specificity</b>        | Expressed predominantly in skeletal muscle (at protein level) (PubMed:10882522, PubMed:31610034). Also detected in heart (PubMed:10882522).  |
| <b>Function</b>                  | function:May play an important role in heart development.,similarity:Belongs to the popeye family.,tissue specificity:Expressed predominantly in skeletal muscle and detected in heart.,   |
| <b>Background</b>                | This gene encodes a member of the POP family of proteins containing three putative transmembrane domains. This gene is expressed in cardiac and skeletal muscle and may play an important role in these tissues during development. Alternatively spliced transcript variants have been found. [provided by RefSeq, Nov 2008], |
| <b>matters needing attention</b> | Avoid repeated freezing and thawing!   |

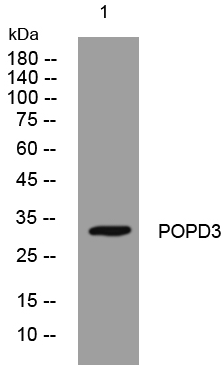
Nanjing BYabscience technology Co.,Ltd



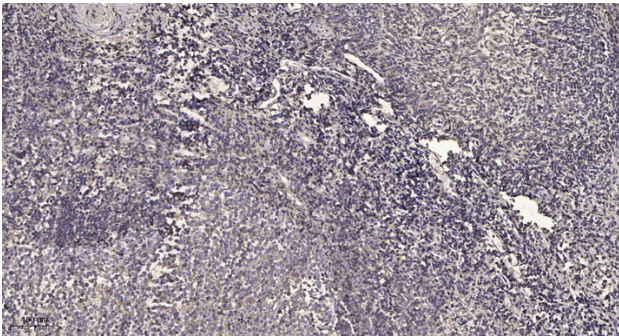
### Usage suggestions

This product can be used in immunological reaction related experiments. For more information, please consult technical personnel.

## Products Images



Western blot analysis of lysates from PC-12 cells, primary antibody was diluted at 1:1000, 4° over night



Immunohistochemical analysis of paraffin-embedded human tonsil. 1, Antibody was diluted at 1:200(4° overnight). 2, Tris-EDTA, pH9.0 was used for antigen retrieval. 3, Secondary antibody was diluted at 1:200(room temperature, 45min).