



ACBG1 rabbit pAb

Catalog No	BYab-12398
Isotype	IgG
Reactivity	Human; Mouse;Rat
Applications	WB
Gene Name	ACSBG1 BGM KIAA0631 LPD
Protein Name	ACBG1
Immunogen	Synthesized peptide derived from human ACBG1 AA range: 496-546
Specificity	This antibody detects endogenous levels of ACBG1 at Human/Mouse/Rat
Formulation	Liquid in PBS containing 50% glycerol, 0.5% BSA and 0.02% sodium azide.
Source	Polyclonal, Rabbit,IgG
Purification	The antibody was affinity-purified from rabbit serum by affinity-chromatography using specific immunogen.
Dilution	WB 1: 500-2000
Concentration	1 mg/ml
Purity	≥90%
Storage Stability	-20°C/1 year
Synonyms	
Observed Band	
Cell Pathway	Cytoplasm . Cytoplasmic vesicle . Microsome . Endoplasmic reticulum . Cell membrane .
Tissue Specificity	Expressed primarily in brain. Expressed at lower level in testis and adrenal gland. Present in all regions of brain except pituitary.
Function	catalytic activity:ATP + a long-chain carboxylic acid + CoA = AMP + diphosphate + an acyl-CoA.,function:Mediates activation of long-chain fatty acids for both synthesis of cellular lipids, and degradation via beta-oxidation. Able to activate long-chain fatty acids. Also able to activate very long-chain fatty acids; however, the relevance of such activity is unclear in vivo. Can activate diverse saturated, monosaturated and polyunsaturated fatty acids.,similarity:Belongs to the ATP-dependent AMP-binding enzyme family. Bubblegum subfamily.,tissue specificity:Expressed primarily in brain. Expressed at lower level in testis and adrenal gland. Present in all regions of brain except pituitary.,
Background	The protein encoded by this gene possesses long-chain acyl-CoA synthetase activity. It is thought to play a central role in brain very long-chain fatty acids

Nanjing BYabscience technology Co.,Ltd



metabolism and myelinogenesis. [provided by RefSeq, Jul 2008],

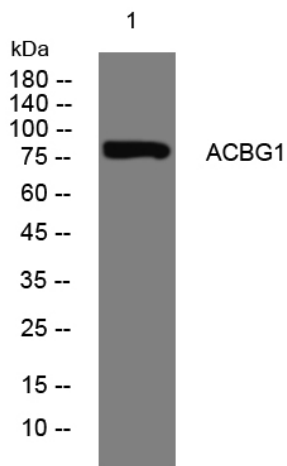
matters needing attention

Avoid repeated freezing and thawing!

Usage suggestions

This product can be used in immunological reaction related experiments. For more information, please consult technical personnel.

Products Images



Western blot analysis of lysates from HeLa cells, primary antibody was diluted at 1:1000, 4° over night