



CMBL rabbit pAb

Catalog No	BYab-12393
Isotype	IgG
Reactivity	Human; Mouse;Rat
Applications	WB
Gene Name	CMBL
Protein Name	CMBL
Immunogen	Synthesized peptide derived from human CMBL AA range: 136-186
Specificity	This antibody detects endogenous levels of CMBL at Human/Mouse/Rat
Formulation	Liquid in PBS containing 50% glycerol, 0.5% BSA and 0.02% sodium azide.
Source	Polyclonal, Rabbit,IgG
Purification	The antibody was affinity-purified from rabbit serum by affinity-chromatography using specific immunogen.
Dilution	WB 1: 500-2000
Concentration	1 mg/ml
Purity	≥90%
Storage Stability	-20°C/1 year
Synonyms	
Observed Band	
Cell Pathway	Cytoplasm, cytosol .
Tissue Specificity	Widely expressed, with highest levels in liver, followed by kidney, small intestine and colon. Present in liver and intestine (at protein level).
Function	similarity:Belongs to the dienelactone hydrolase family.,
Background	CMBL (EC 3.1.1.45) is a cysteine hydrolase of the dienelactone hydrolase family that is highly expressed in liver cytosol. CMBL preferentially cleaves cyclic esters, and it activates medoxomil-ester prodrugs in which the medoxomil moiety is linked to an oxygen atom (Ishizuka et al., 2010 [PubMed 20177059]).[supplied by OMIM, Apr 2010],
matters needing attention	Avoid repeated freezing and thawing!

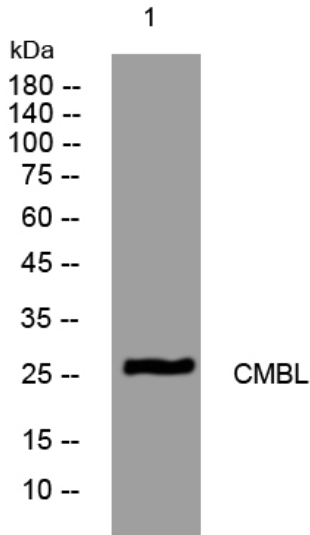
Nanjing BYabscience technology Co.,Ltd



Usage suggestions

This product can be used in immunological reaction related experiments. For more information, please consult technical personnel.

Products Images



Western blot analysis of lysates from U2OS cells, primary antibody was diluted at 1:1000, 4° over night