



# JADE3 rabbit pAb

<b>Catalog No</b>	BYab-12377
<b>Isotype</b>	IgG
<b>Reactivity</b>	Human; Mouse
<b>Applications</b>	WB;IHC
<b>Gene Name</b>	PHF16 JADE3 KIAA0215
<b>Protein Name</b>	JADE3
<b>Immunogen</b>	Synthesized peptide derived from human JADE3 AA range: 484-534
<b>Specificity</b>	This antibody detects endogenous levels of JADE3 at Human/Mouse
<b>Formulation</b>	Liquid in PBS containing 50% glycerol, 0.5% BSA and 0.02% sodium azide.
<b>Source</b>	Polyclonal, Rabbit,IgG
<b>Purification</b>	The antibody was affinity-purified from rabbit serum by affinity-chromatography using specific immunogen.
<b>Dilution</b>	WB 1:500-2000;IHC-p 1:50-300
<b>Concentration</b>	1 mg/ml
<b>Purity</b>	≥90%
<b>Storage Stability</b>	-20°C/1 year
<b>Synonyms</b>	
<b>Observed Band</b>	
<b>Cell Pathway</b>	histone acetyltransferase complex,
<b>Tissue Specificity</b>	Ubiquitously expressed, with highest levels in placenta and uterus.
<b>Function</b>	function:Component of the HBO1 complex which has a histone H4-specific acetyltransferase activity, a reduced activity toward histone H3 and is responsible for the bulk of histone H4 acetylation in vivo.,induction:By estradiol in estrogen-responsive breast cancer cells.,similarity:Belongs to the JADE family.,similarity:Contains 1 PHD-type zinc finger.,subunit:Component of the HBO1 complex composed at least of ING4 or ING5, MYTS2/HBO1, EAF6, and one of PHF15, PHF16 and PHF17.,tissue specificity:Ubiquitously expressed, with highest levels in placenta and uterus.,
<b>Background</b>	This gene encodes a member of a family of large proteins containing PHD (plant homeo domain)-type zinc fingers. The encoded protein may be associated in a nuclear complex that functions in histone H4 acetylation. Alternative splicing

Nanjing BYabscience technology Co.,Ltd



results in multiple transcript variants encoding the same protein. [provided by RefSeq, Aug 2013],

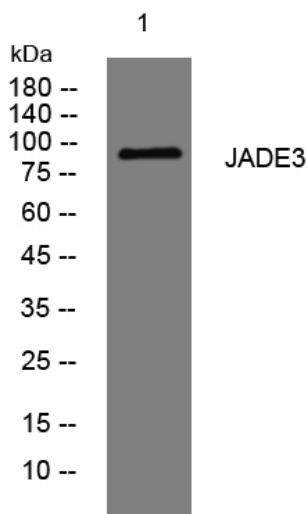
**matters needing attention**

Avoid repeated freezing and thawing!

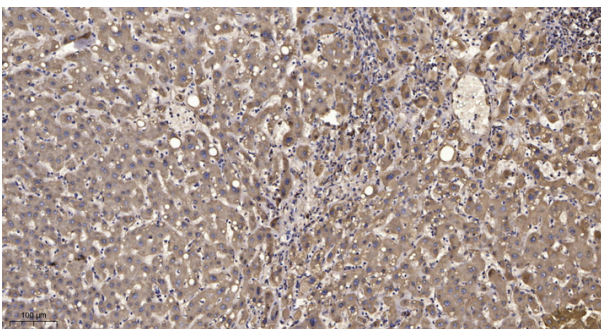
**Usage suggestions**

This product can be used in immunological reaction related experiments. For more information, please consult technical personnel.

## Products Images



Western blot analysis of lysates from KB cells, primary antibody was diluted at 1:1000, 4° over night



Immunohistochemical analysis of paraffin-embedded human liver cancer. 1, Antibody was diluted at 1:200(4° overnight). 2, Tris-EDTA, pH9.0 was used for antigen retrieval. 3, Secondary antibody was diluted at 1:200(room temperature, 45min).