



# HACL1 rabbit pAb

<b>Catalog No</b>	BYab-12374
<b>Isotype</b>	IgG
<b>Reactivity</b>	Human; Mouse;Rat
<b>Applications</b>	WB
<b>Gene Name</b>	HACL1 HPCL HPCL2 PHYH2 HSPC279
<b>Protein Name</b>	HACL1
<b>Immunogen</b>	Synthesized peptide derived from human HACL1 AA range: 323-373
<b>Specificity</b>	This antibody detects endogenous levels of HACL1 at Human/Mouse/Rat
<b>Formulation</b>	Liquid in PBS containing 50% glycerol, 0.5% BSA and 0.02% sodium azide.
<b>Source</b>	Polyclonal, Rabbit,IgG
<b>Purification</b>	The antibody was affinity-purified from rabbit serum by affinity-chromatography using specific immunogen.
<b>Dilution</b>	WB 1: 500-2000
<b>Concentration</b>	1 mg/ml
<b>Purity</b>	≥90%
<b>Storage Stability</b>	-20°C/1 year
<b>Synonyms</b>	
<b>Observed Band</b>	
<b>Cell Pathway</b>	Peroxisome .
<b>Tissue Specificity</b>	Widely expressed.
<b>Function</b>	catalytic activity:2-hydroxyphytanoyl-CoA = pristanal + formyl-CoA.,cofactor: Binds 1 magnesium ion per subunit.,cofactor: Binds 1 thiamine pyrophosphate per subunit.,function: Catalyzes a carbon-carbon cleavage reaction; cleaves a 2-hydroxy-3-methylacyl-CoA into formyl-CoA and a 2-methyl-branched fatty aldehyde.,pathway: Lipid metabolism; fatty acid metabolism.,similarity: Belongs to the TPP enzyme family.,subunit: Homotetramer.,tissue specificity: Expressed in high levels in liver, also expressed in kidney, heart and skeletal muscle.,
<b>Background</b>	

Nanjing BYabscience technology Co.,Ltd



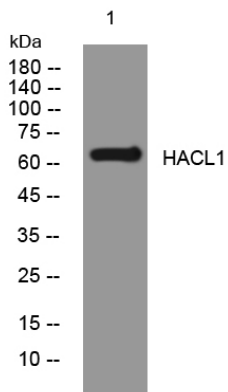
**matters needing attention**

Avoid repeated freezing and thawing!

**Usage suggestions**

This product can be used in immunological reaction related experiments. For more information, please consult technical personnel.

## Products Images



Western blot analysis of lysates from U2OS cells, primary antibody was diluted at 1:1000, 4° over night