



DUX3 rabbit pAb

Catalog No	BYab-12370
Isotype	IgG
Reactivity	Human;Rat;Mouse;
Applications	WB
Gene Name	DUX3
Protein Name	DUX3
Immunogen	Synthesized peptide derived from human DUX3 AA range: 27-77
Specificity	This antibody detects endogenous levels of DUX3 at Human
Formulation	Liquid in PBS containing 50% glycerol, 0.5% BSA and 0.02% sodium azide.
Source	Polyclonal, Rabbit,IgG
Purification	The antibody was affinity-purified from rabbit serum by affinity-chromatography using specific immunogen.
Dilution	WB 1: 500-2000
Concentration	1 mg/ml
Purity	≥90%
Storage Stability	-20°C/1 year
Synonyms	
Observed Band	
Cell Pathway	Nucleus .
Tissue Specificity	Expressed in hepatoma Hep3B cells.
Function	developmental stage:Expressed in fetal tissue.,miscellaneous:DUX genes are present in 3.3-kilobase elements, a tandem repeat family scattered in the genome found on the short arms of all acrocentric chromosomes as well as on several other chromosomes. May be functional despite lack of introns and of a poly(A) addition signal.,similarity:Belongs to the paired homeobox family.,similarity:Contains 2 homeobox DNA-binding domains.,tissue specificity:Expressed in hepatoma Hep3B cells.,
Background	The human genome contains hundreds of repeats of the 3.3-kb family in regions associated with heterochromatin. The DUX gene family, including DUX3, resides within these 3.3-kb repeated elements (Beckers et al., 2001 [PubMed 11245978]). See DUX4 (MIM 606009).[supplied by OMIM, Mar 2008],

Nanjing BYabscience technology Co.,Ltd



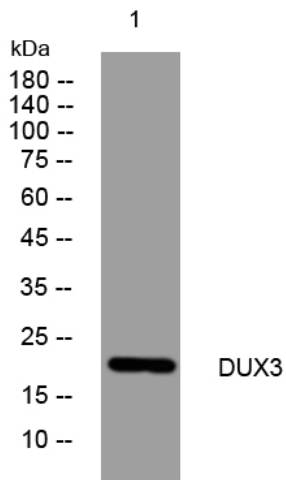
matters needing attention

Avoid repeated freezing and thawing!

Usage suggestions

This product can be used in immunological reaction related experiments. For more information, please consult technical personnel.

Products Images



Nanjing BYabscience technology Co.,Ltd

网址: www.njbybio.com

官方热线: 025-5229-8998

监督电话: 15950492658