



EVI5 rabbit pAb

Catalog No	BYab-12369
Isotype	IgG
Reactivity	Human; Mouse
Applications	WB
Gene Name	EVI5 NB4S
Protein Name	EVI5
Immunogen	Synthesized peptide derived from human EVI5 AA range: 1-51
Specificity	This antibody detects endogenous levels of EVI5 at Human/Mouse
Formulation	Liquid in PBS containing 50% glycerol, 0.5% BSA and 0.02% sodium azide.
Source	Polyclonal, Rabbit,IgG
Purification	The antibody was affinity-purified from rabbit serum by affinity-chromatography using specific immunogen.
Dilution	WB 1: 500-2000
Concentration	1 mg/ml
Purity	≥90%
Storage Stability	-20°C/1 year
Synonyms	
Observed Band	
Cell Pathway	Nucleus. Cytoplasm, cytoskeleton, microtubule organizing center, centrosome. Cytoplasm, cytoskeleton, spindle. Associates with the mitotic spindle through anaphase and remains within the midzone and midbody until completion of cytokinesis.
Tissue Specificity	Expressed in various cell lines (at protein level). Expressed in a wide range of tissues including brain and adrenal.
Function	disease:A chromosomal aberration involving EVI5 is found in a patient with stage 4S neuroblastoma. Translocation t(1;10)(p22;q21) that forms a EVI5-TRNG10 fusion protein. TRNG10 is a probable structural transcript which is normally not translated.,function:Functions as a regulator of cell cycle progression by stabilizing the FBXO5 protein and promoting cyclin-A accumulation during interphase. May play a role in cytokinesis.,induction:Down-regulated during mitosis through proteasomal degradation.,miscellaneous:Depletion of EVI5 by RNAi causes cell cycle arrest and mitotic abnormalities.,PTM:Probably phosphorylated by PLK1; may be required for degradation during

Nanjing BYabscience technology Co.,Ltd



mitosis.,PTM:Ubiquitinated. Degradation during prophase is ubiquitin-dependent.,similarity:Contains 1 Rab-GAP TBC domain.,subcellular location:Associates with the mitotic spindle through anaphase and remains within the midzone and

Background

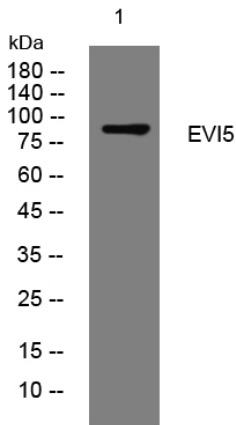
matters needing attention

Avoid repeated freezing and thawing!

Usage suggestions

This product can be used in immunological reaction related experiments. For more information, please consult technical personnel.

Products Images



Western blot analysis of lysates from HuvEc cells, primary antibody was diluted at 1:1000, 4° over night