



TINAG rabbit pAb

Catalog No	BYab-12348
Isotype	IgG
Reactivity	Human;Rat;Mouse;
Applications	WB;IHC
Gene Name	TINAG
Protein Name	TINAG
Immunogen	Synthesized peptide derived from human TINAG AA range: 80-130
Specificity	This antibody detects endogenous levels of TINAG at Human
Formulation	Liquid in PBS containing 50% glycerol, 0.5% BSA and 0.02% sodium azide.
Source	Polyclonal, Rabbit,IgG
Purification	The antibody was affinity-purified from rabbit serum by affinity-chromatography using specific immunogen.
Dilution	WB 1:500-2000;IHC-p 1:50-300
Concentration	1 mg/ml
Purity	≥90%
Storage Stability	-20°C/1 year
Synonyms	
Observed Band	
Cell Pathway	Secreted, extracellular space, extracellular matrix, basement membrane .
Tissue Specificity	Expressed in the kidney cortex, small intestine and cornea.
Function	developmental stage:Initially observed in the Bowman capsule during early glomerular capillary loop formation in the kidney. In more developmentally mature glomeruli, following transition from early to mid-capillary loop stage, expression is higher in the proximal tubular basement membrane than in the distal basement membrane and Bowman capsule.,disease:Antibodies against TINAG are found in sera of patients with tubulointerstitial nephritis, a rare autoimmune disorder that causes acute and chronic renal injury.,function:Mediates adhesion of proximal tubule epithelial cells via integrins alpha3-beta1 and alphaV-beta3.,PTM:It has been suggested that the active SMB domain may be permitted considerable disulfide bond heterogeneity or variability, thus 2 alternate disulfide patterns based on 3D structures are described with 1 disulfide bond conserved in both.,similarity:Belongs to the peptida

Nanjing BYabscience technology Co.,Ltd



Background

This gene encodes a glycoprotein that is restricted within the kidney to the basement membranes underlying the epithelium of Bowman's capsule and proximal and distal tubules. Autoantibodies against this protein are found in sera of patients with tubulointerstitial nephritis, membranous nephropathy and anti-glomerular basement membrane nephritis. Ontogeny studies suggest that the expression of this antigen is developmentally regulated in a precise spatial and temporal pattern throughout nephrogenesis. [provided by RefSeq, Nov 2011],

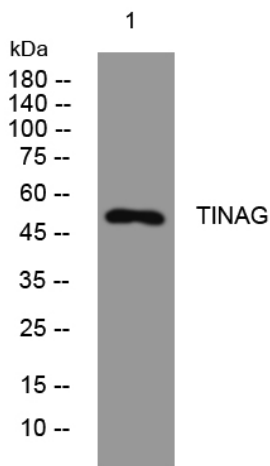
matters needing attention

Avoid repeated freezing and thawing!

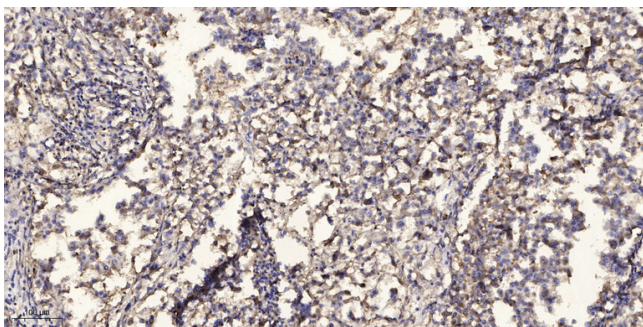
Usage suggestions

This product can be used in immunological reaction related experiments. For more information, please consult technical personnel.

Products Images



Western blot analysis of lysates from K562 cells, primary antibody was diluted at 1:1000, 4° over night



Immunohistochemical analysis of paraffin-embedded human Squamous cell carcinoma of lung. 1, Antibody was diluted at 1:200(4° overnight). 2, Tris-EDTA,pH9.0 was used for antigen retrieval. 3,Secondary antibody was diluted at 1:200(room temperature, 45min).