



RN213 rabbit pAb

Catalog No	BYab-12339
Isotype	IgG
Reactivity	Human; Mouse
Applications	IHC;IF
Gene Name	RNF213 ALO17 C17orf27 KIAA1554 KIAA1618 MYSTR
Protein Name	RN213
Immunogen	Synthesized peptide derived from human RN213. AA range:307-407
Specificity	This antibody detects endogenous levels of RN213 at Human/Mouse
Formulation	Liquid in PBS containing 50% glycerol, 0.5% BSA and 0.02% sodium azide.
Source	Polyclonal, Rabbit,IgG
Purification	The antibody was affinity-purified from rabbit serum by affinity-chromatography using specific immunogen.
Dilution	IHC-p 1: 50-200. IF 1:50-200
Concentration	1 mg/ml
Purity	≥90%
Storage Stability	-20°C/1 year
Synonyms	
Observed Band	
Cell Pathway	Cytoplasm, cytosol . Lipid droplet .
Tissue Specificity	Widely expressed (at protein level). ; [Isoform 1]: Major isoform detected in all tissues examined. ; [Isoform 2]: Minor isoform with restricted expression.
Function	disease:A chromosomal aberration involving ALO17 is associated with anaplastic large-cell lymphoma (ALCL). Translocation t(2;17)(p23;q25) with ALK.,sequence caution:Translated as Gln.,similarity:Contains 1 RING-type zinc finger.,
Background	This gene encodes a protein containing a C3HC4-type RING finger domain, which is a specialized type of Zn-finger that binds two atoms of zinc and is thought to be involved in mediating protein-protein interactions. The protein also contains an AAA domain, which is associated with ATPase activity. This gene is a susceptibility gene for Moyamoya disease, a vascular disorder of intracranial arteries. This gene is also a translocation partner in anaplastic large cell lymphoma and inflammatory myofibroblastic tumor cases, where a t(2;17)(p23;q25) translocation has been identified with the anaplastic lymphoma

Nanjing BYabscience technology Co.,Ltd



kinase (ALK) gene on chromosome 2, and a t(8;17)(q24;q25) translocation has been identified with the MYC gene on chromosome 8. Alternative splicing results in multiple transcript variants. [provided by RefSeq, Dec 2011],

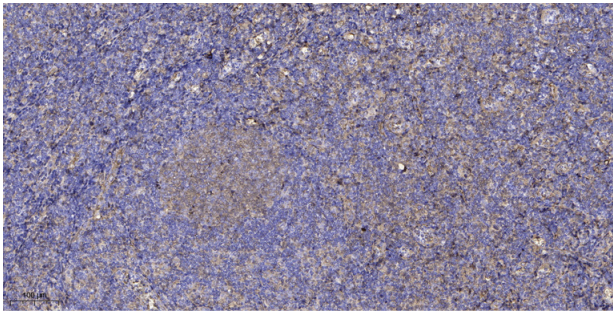
matters needing attention

Avoid repeated freezing and thawing!

Usage suggestions

This product can be used in immunological reaction related experiments. For more information, please consult technical personnel.

Products Images



Immunohistochemical analysis of paraffin-embedded human tonsil. 1, Antibody was diluted at 1:200(4° overnight). 2, Tris-EDTA,pH9.0 was used for antigen retrieval. 3,Secondary antibody was diluted at 1:200(room temperature, 30min).